



TECHNICAL MEMO #3

REGIONAL TRAIL STRATEGY - ELECTORAL AREA A

PREPARED FOR:



COLUMBIA SHUSWAP REGIONAL DISTRICT +
REGIONAL TRAIL STRATEGY WORKING GROUP

April 25, 2018

SUBMITTED BY:



LARCH

Landscape Architecture + Authentic Mountain Design
Box 1738
Golden, BC V0A 1H0
larchlandscapearchitecture@gmail.com
larchlandscapearchitecture.com



SELKIRK PLANNING & DESIGN

Community Planning | Urban Design
Revelstoke, BC V0E 2S0
selkirkplanning@gmail.com
selkirkplanning.ca

CONTENTS

- 1 PROJECT OVERVIEW
- 2 PROJECT PROGRESS
- 3 STRENGTH, WEAKNESS, OPPORTUNITIES, THREATS [SWOT] MAPPING
- 4 DECISION MAKING MATRIX
- 5 SUMMARY
- 6 NEXT STEPS



Photo: Tourism Golden/Dave Best

01 PROJECT OVERVIEW

With a total area of 13,735 square kilometers, Area A encompasses the Town of Golden, Blaeberry, Donald, Habart, Parson, Nicholson, surrounding rural area, extending east to the community of Field. Bordered by the Rocky Mountains, Columbia Mountain ranges, and in close proximity to some of the most stunning National Parks within Canada, the beauty of the natural environment and active and passive recreational opportunities within Area A are outstanding. The area is experiencing rapid growth in tourism and in the public and commercial outdoor recreation sector for a broad range of user groups including motorized and non-motorized recreational activities. Recreation has become a top priority and the creation of an area-wide regional trail strategy presents an opportunity to manage this growth intelligently, create a comprehensive inventory of existing assets, strengthen local partnerships, minimize conflicts, support environmental, social, cultural, and health values, while contributing to the local and provincial economies.

In 2016, the communities of Golden and Electoral Area A engaged in two facilitated meetings to investigate collaborative opportunities to inventory, develop, and maintain a trail network within the region. These facilitated meetings gathered a wealth of local expertise and diversity of perspectives throughout Area A. The outcome of the facilitated consultation sessions was a consensus to proceed a Regional Trail Strategy for Golden and Area A. The existing Area A Parks Plan, Golden Backcountry Recreation Access Plan, current bylaws,

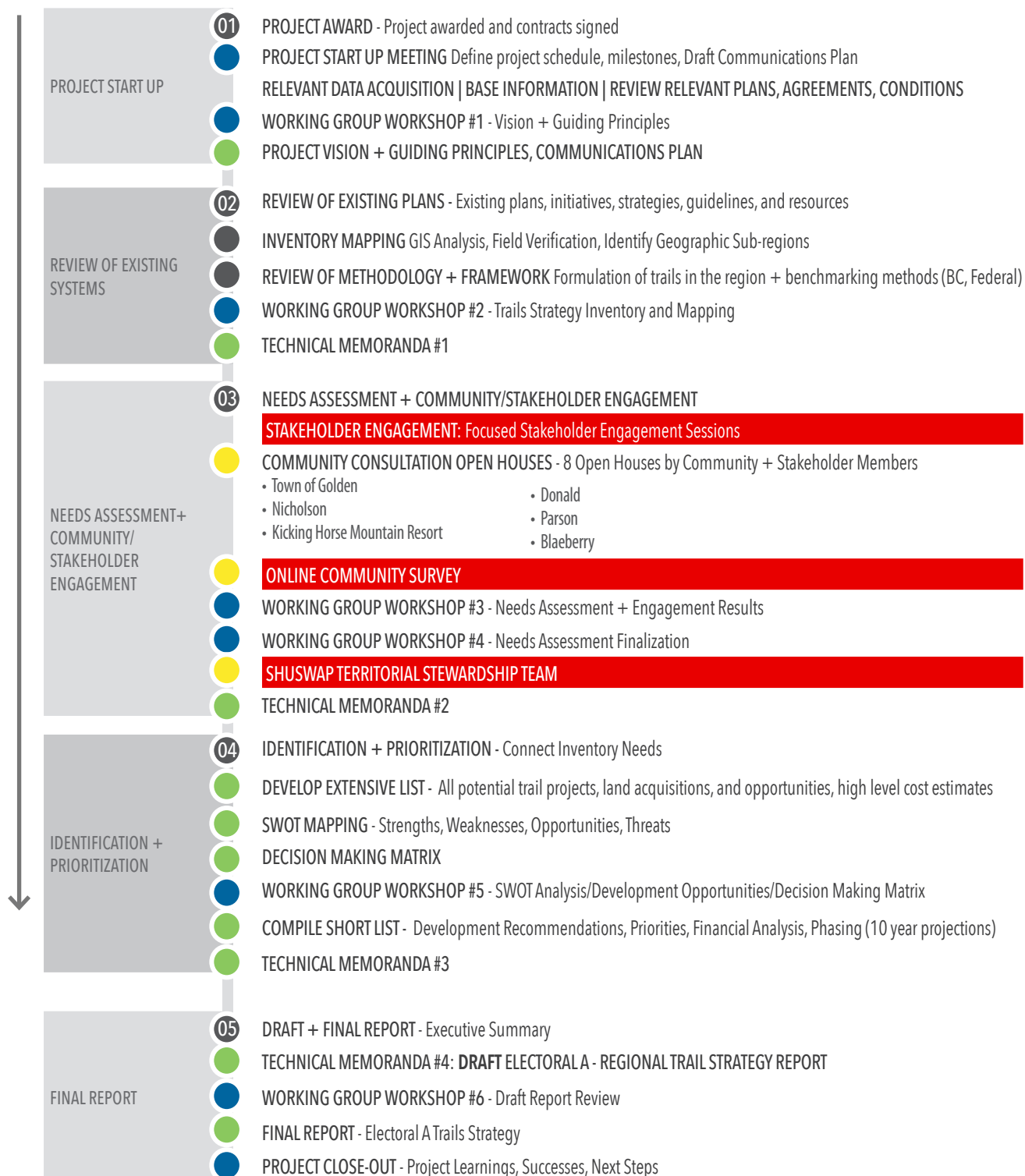
and planning documents provide a solid foundation to inform this Regional Trail Strategy. With the Electoral Area A Parks Plan being in effect over a ten year period, an update is anticipated over the next two years and effort will be given to inform and strategically harmonize between the development of the Regional Trail Strategy and the update of the Parks Plan.

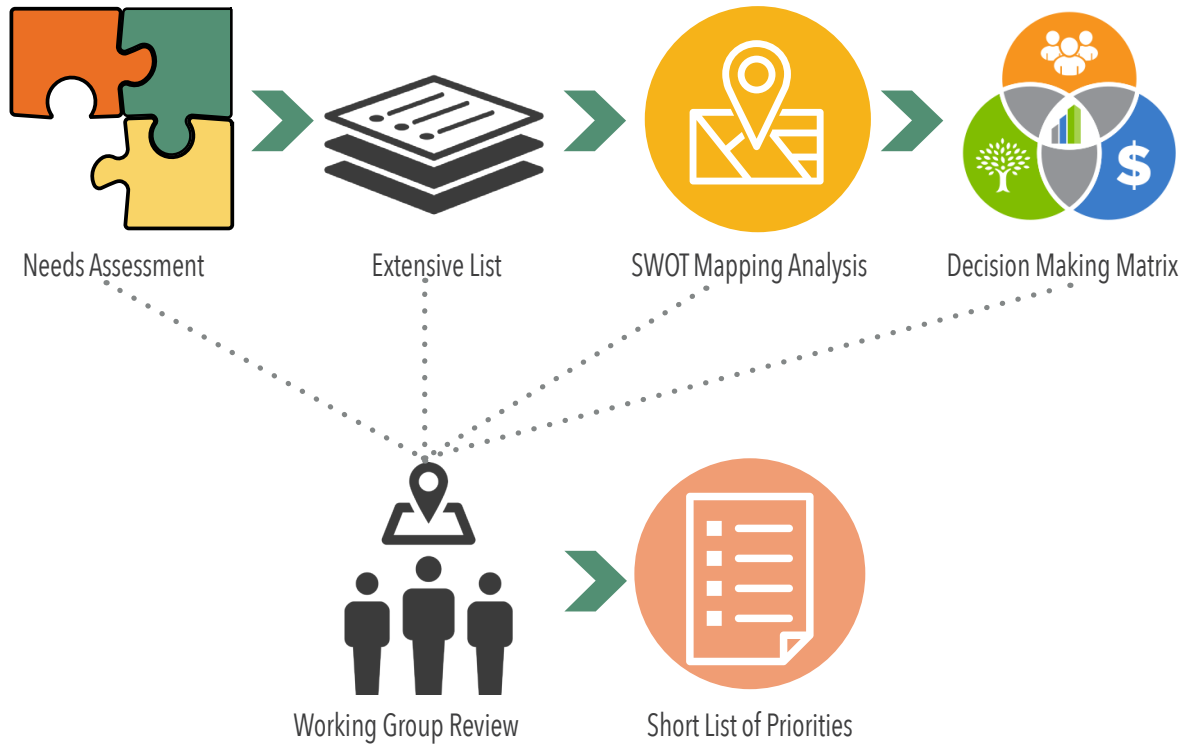
To achieve the goals and desired outcomes for this Regional Trail Strategy, the project has been structured into the following phases:

- 01 PHASE 1: PROJECT START-UP
- 02 PHASE 2: REVIEW OF EXISTING SYSTEMS
- 03 PHASE 3: NEEDS ASSESSMENT +
COMMUNITY/STAKEHOLDER ENGAGEMENT
- 04 PHASE 4: IDENTIFICATION + PRIORITIZATION
OF OPTIONS - CONNECT INVENTORY NEEDS
- 05 PHASE 5: FINAL REPORT

02 PROJECT PROGRESS

● Project Phase Starts ● Major Deliverable ● Working Group Meetings ● Planned Consultation ● Community Consultation / Open House





03

STRENGTH, WEAKNESS, OPPORTUNITY + THREATS [SWOT] MAPPING

Building upon the inventory and needs assessment data developed throughout the stakeholder and public engagement phase, the project team undertook a hybrid PEST/SWOT Analysis approach. The needs assessment generated an unfiltered collection of over 100 ideas, opportunities, deficiencies, and potential projects for consideration. The PEST approach analyzes big picture opportunities and threats (Political, Economic, Socio-cultural, and Technology). For example this method would identify a political factor such as an applicable Rural Dividend grant and the opportunity to apply for funding. By looking at these external trends, it informs the development of strengths, weaknesses, opportunities, and threats (SWOT). The project team has undertaken a series of mapping exercises to identify the strengths, weaknesses, opportunities, and threats represented throughout the Electoral Area A boundary. The SWOT analysis approach allows the project team and working group to analyze the spatial relationships of underutilized spaces, barriers, land ownership, wildlife, vegetation, potential development areas, and critical linkages through the lens of the vision and guiding principles. These SWOT analysis maps have been developed in tandem with the decision making matrix to filter the extensive needs assessment list while taking into consideration

the community desires, demographics, environmental, political and financial complexities.

The SWOT mapping exercise incorporates community feedback about existing issues and opportunities. Feedback was gathered through the public open house, the community survey, input and information from the working group, and through direct contact with trails organizations / user groups / First Nations / governmental officials. Where possible this knowledge has been mapped.

The criteria for identifying Strengths, Weaknesses, Opportunities, and Threats is all considered in the context of establishing trails. Strengths and Weaknesses are "internal" or specifically related to a trail, piece of infrastructure, organization, or trail area. Opportunities and Threats are "external" and relate specifically to non-existent or non-trail-related factors that need to be considered before deciding to support (or not) trail development. Ex: An area of high ecological value is an overall strength of Area A, but it would threaten any trail development. For the mapping purposes, it's been identified as a threat to trail development.

STRENGTHS, WEAKNESSES,
OPPORTUNITIES & THREATS MAP
Region-Wide Area

STRENGTHS (OF EXISTING TRAILS)

- 01 The Town of Golden has a strong representation of trail advocates and organizations that contribute to an already strong and diverse trail network throughout CSRD Area A

WEAKNESSES (WITHIN EXISTING TRAILS SYSTEM)

- 01 Glacier NP is already experiencing encroachment into the park, conflicting with their ecological mandate. Further trail use along its border could exasperate the issue further.
- 02 While trails organizations are strong they currently don't work together to partner on funding and opportunities and partnerships agreements
- 03 At present grant funding and municipal funding are geared toward new trail development while local organizations struggle to secure funding for regular trail maintenance and rehabilitation

OPPORTUNITIES (EXTERNAL THAT MAY ENHANCE TRAILS)

- 01 Opportunity to re-establish a National Historic Trail and connect into Jasper NP with a potential loop trail.
- 02 Opportunity to develop a multi-day paddling route from south of Golden to Mica Dam/Valemount
- 03 Opportunity to re-establish the Howse Pass Trail and connect into Banff NP
- 04 Opportunity to re-establish the Amiskwi Pass Trail and connect into Yoho NP
- 05 Opportunity to connect the Historical Great Divide Trail
- 06 The existing Highway 95 right-of-way provides the opportunity to develop a multi-modal trail connection from Golden to the south
- 07 Existing forestry service roads provide an opportunity to develop a motorized trail system to the south without creating further impact on the surrounding environment
- 08 Heritage, culture and ares important to local First Nations aren't currently well documented or understood. However, the Shuswap First Nations is interested in partnering with local organizations to recognize and celebrate First Nations history in the area.
- 09 A regional multimodal trail from Golden south provides an opportunity to connect with the Columbia Valley Greenways Trail Alliance.

THREATS (EXTERNAL THAT MAY THREATEN TRAIL DEVELOPMENT)

- 01 Several areas are identified as having a high sensitivity to alteration from recreation
- 02 Areas are identified as having a high biodiversity may be impacted by further trail development
- 03 Recreation activities located a long distance from Golden, Jasper & Banff are extremely remote and present Search and Rescue challenges
- 04 The impact of trails on wildlife and the environment are currently unknown, such as important corridors, cumulative effects, carrying capacity/trail density.
- 05 There are 6 areas managed as "Conservation Lands" by the Provincial Government, including the Columbia Wetlands Wildlife Management Area. Trail development may be restricted in these areas
- 06 The hydro right-of-way trail potential is threatened by large, steep valleys and critical habitat areas

KEY LEGEND

Priority Planning Area (PPA) Boundary

Proposed Regional Action

Proposed PPA-Specific Action

Potential Route (Opportunity)

Potential Route (Water-Based Opportunity)

Line of Conflict or Challenge

Provincially Identified Area Sensitive to Alteration

Provincially Identified Area of High Biodiversity

Conservation Land (Provincially Managed)

Area of Potential Threat to Future Trail Development

Assumed Important Wildlife Areas (further study req'd)

National Park

Provincial Park

BC Rec Site

Existing Trails

Existing Trails (Parks Canada)

Highway 1

Major Road

Forestry Service Road

Waterbodies

Wetlands (Provincially Mapped)

NORTH

Scale 1:300,000

0

5

10

15

20

25

KILOMETERS

CSRD

COLUMBIA SHUSWAP REGIONAL DISTRICT

CLIENT

Columbia Shuswap Regional District
555 Harbourfront Drive NE
PO Box 978
Salmon Arm, BC V1E 4P1

ISSUE

2017/05/31

RE-ISSUE

2018/05/03

DRAWN BY

FB & JJ

SHEET SIZE

24 X 36 inches

COLUMBIA SHUSWAP REGIONAL
DISTRICT AREA A TRAILS STRAEGTY

LARCH

SELKIRK PLANNING & DESIGN

01

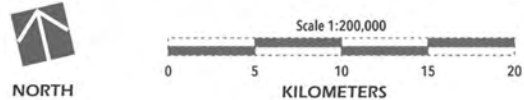
STRENGTHS, WEAKNESSES,
OPPORTUNITIES & THREATS MAP
Kinbasket Area

OPPORTUNITIES (EXTERNAL THAT MAY ENHANCE TRAILS)

- 01 Potential Search and Rescue opportunities from Jasper as it's closer than Golden. It would require coordination and agreements with SAR crews in Alberta.
- 02 Potential for a loop trail from Jasper NP's Athabasca Pass Trail to the Fortress Lake Trail as a part of a regional trail improvement to these trails (#10) in partnership with Parks Canada.
- 03 The opportunity to work with Rec Sites and Trails BC to identify and sign camping sites suitable for multi-day paddling trips can help support the regional goal (#9)
- 04 Help Lake and Blackwater Rec Areas currently have informal climbing areas, presenting an opportunity to formalize climbing and trailhead areas.

THREATS (EXTERNAL THAT MAY THREATEN TRAIL DEVELOPMENT)

- 01 Areas are identified as having a high sensitivity to alteration from recreation
- 02 Areas are identified as having a high biodiversity
- 03 Areas of high environmental value that overlap, indicate very important areas that should see limited trail development
- 04 Wildlife corridors in Area A are currently unknown. Further study may recommend restricting further trail development to maintain viable wildlife populations



KEY MAP
1:1,500,000

KEY LEGEND

Priority Planning Area (PPA) Boundary

Proposed Regional Action

Proposed PPA-Specific Action

Potential Route (Opportunity)

Potential Route (Water-Based Opportunity)

Line of Conflict or Challenge

Provincially Identified Area Sensitive to Alteration

Provincially Identified Area of High Biodiversity

Conservation Land (Provincially Managed)

Area of Potential Threat to Future Trail Development

Assumed Important Wildlife Areas (further study req'd)

National Park

Provincial Park

BC Rec Site

Existing Trails

Existing Trails (Parks Canada)

Highway 1

Major Road

Forestry Service Road

Waterbodies

Wetlands (Provincially Mapped)

CLIENT

Columbia Shuswap Regional District
555 Harbourfront Drive NE
PO Box 978
Salmon Arm, BC V1E 4P1

ISSUE

2017/05/31

RE-ISSUE

2018/05/03

DRAWN BY

FB & JJ

SHEET SIZE

24 X 36 Inches

COLUMBIA SHUSWAP REGIONAL
DISTRICT AREA A TRAILS STRAEGTY

LARCH

SELKIRK
PLANNING
& DESIGN

C

02

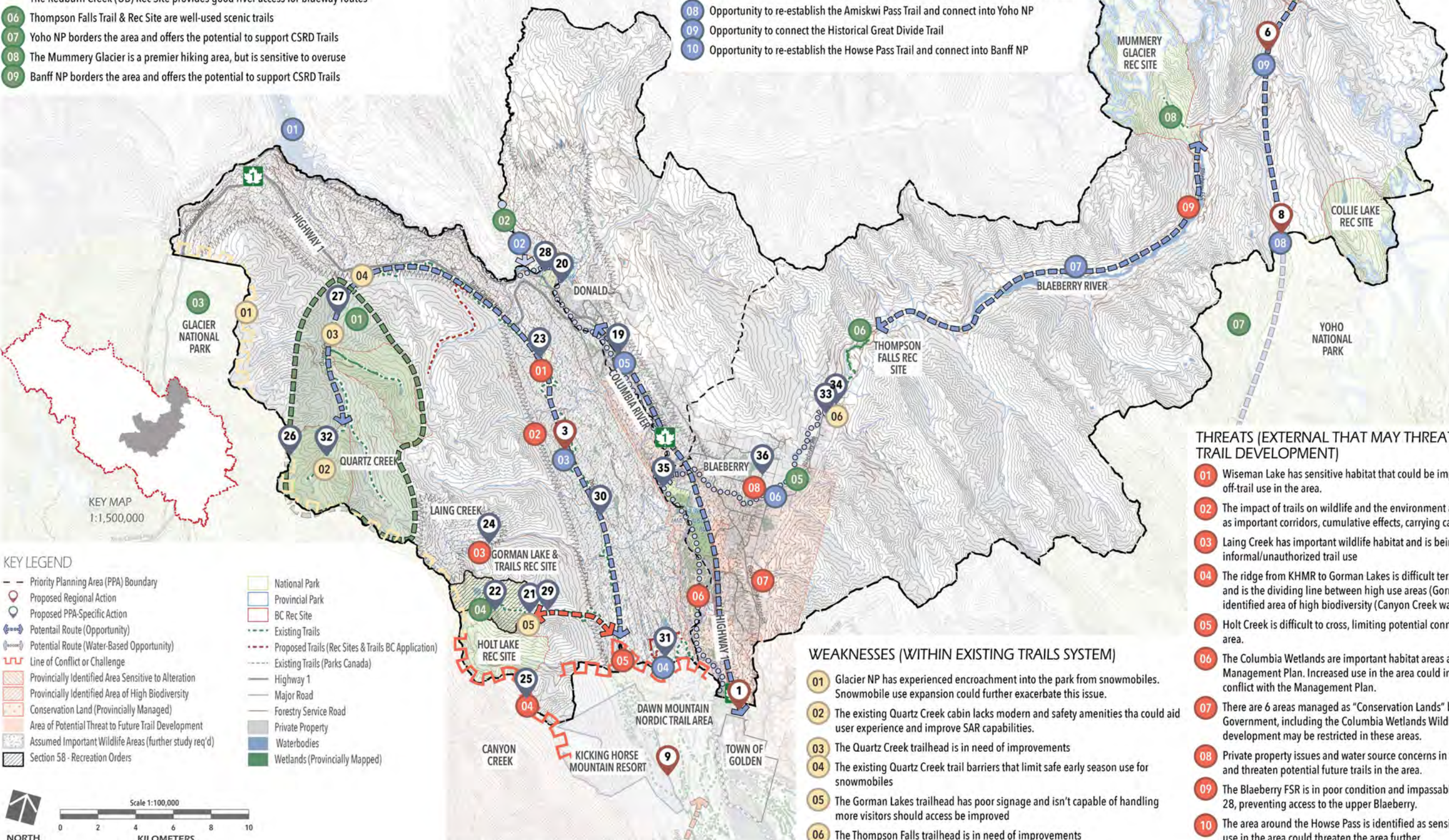
STRENGTHS, WEAKNESSES, OPPORTUNITIES & THREATS MAP
Quartz + Bluewater/Donald + Blaeberry

STRENGTHS (OF EXISTING TRAILS)

- 01 The Golden Snowmobile Club is well organized and is strong at managing its trail network
- 02 The 2 Bluewater Rec Sites provide strong bases for potential paddling access points
- 03 Glacier NP borders the area and offers the potential to support CSRD Trails
- 04 The Gorman/Holt Areas are premier hiking destinations but trail restrictions apply (seasonal closures, wildlife habitat, GBRAP helicopter landing restrictions, etc.)
- 05 The Redburn Creek (OB) Rec Site provides good river access for blueway routes
- 06 Thompson Falls Trail & Rec Site are well-used scenic trails
- 07 Yoho NP borders the area and offers the potential to support CSRD Trails
- 08 The Mummery Glacier is a premier hiking area, but is sensitive to overuse
- 09 Banff NP borders the area and offers the potential to support CSRD Trails

OPPORTUNITIES (EXTERNAL THAT MAY ENHANCE TRAILS)

- 01 Opportunity to develop a multi-day paddling route from south of Golden to Mica Dam/Valemount
- 02 Opportunity for blueway connection along Bluewater Creek
- 03 Heritage, culture and ares important to local First Nations aren't currently well documented or understood. However, the Shuswap First Nations is interested in partnering with local organizations to recognize and celebrate First Nations history in the area
- 04 Opportunity to establish a permanent location for summer motorized use, limiting impact to a small area, and freeing up Reflection Lake for enhancements/reclamation
- 05 The existing Highway 95 right-of-way provides the opportunity to develop a multi-modal trail connection from Golden, north to Donald (long-term).
- 06 Potential blueway route from Redburn Creek (OB) Rec Site down the Blaeberry River
- 07 Improvements to the Blaeberry FSR with a long term maintenance agreement can provide better access to the upper Blaeberry, Mummery Glacier and Howse Pass Trails.
- 08 Opportunity to re-establish the Amiskwi Pass Trail and connect into Yoho NP
- 09 Opportunity to connect the Historical Great Divide Trail
- 10 Opportunity to re-establish the Howse Pass Trail and connect into Banff NP



KEY LEGEND

- Priority Planning Area (PPA) Boundary
- Proposed Regional Action
- Proposed PPA-Specific Action
- Potential Route (Opportunity)
- Potential Route (Water-Based Opportunity)
- Line of Conflict or Challenge
- Provincially Identified Area Sensitive to Alteration
- Provincially Identified Area of High Biodiversity
- Conservation Land (Provincially Managed)
- Area of Potential Threat to Future Trail Development
- Assumed Important Wildlife Areas (further study req'd)
- Section 58 - Recreation Orders

- National Park
- Provincial Park
- BC Rec Site
- Existing Trails
- Proposed Trails (Rec Sites & Trails BC Application)
- Existing Trails (Parks Canada)
- Highway 1
- Major Road
- Forestry Service Road
- Private Property
- Waterbodies
- Wetlands (Provincially Mapped)

WEAKNESSES (WITHIN EXISTING TRAILS SYSTEM)

- 01 Glacier NP has experienced encroachment into the park from snowmobiles. Snowmobile use expansion could further exacerbate this issue.
- 02 The existing Quartz Creek cabin lacks modern and safety amenities tha could aid user experience and improve SAR capabilities.
- 03 The Quartz Creek trailhead is in need of improvements
- 04 The existing Quartz Creek trail barriers that limit safe early season use for snowmobiles
- 05 The Gorman Lakes trailhead has poor signage and isn't capable of handling more visitors should access be improved
- 06 The Thompson Falls trailhead is in need of improvements

THREATS (EXTERNAL THAT MAY THREATEN TRAIL DEVELOPMENT)

- 01 Wiseman Lake has sensitive habitat that could be impacted by increased on- and off-trail use in the area.
- 02 The impact of trails on wildlife and the environment are currently unknown, such as important corridors, cumulative effects, carrying capacity/trail density.
- 03 Laing Creek has important wildlife habitat and is being impacted by informal/unauthorized trail use
- 04 The ridge from KHRM to Gorman Lakes is difficult terrain with sensitive habitat, and is the dividing line between high use areas (Gorman and Holt Creek) and an identified area of high biodiversity (Canyon Creek watershed).
- 05 Holt Creek is difficult to cross, limiting potential connections from the KHRM area.
- 06 The Columbia Wetlands are important habitat areas and under a Provincial Management Plan. Increased use in the area could impact the area and be in conflict with the Management Plan.
- 07 There are 6 areas managed as "Conservation Lands" by the Provincial Government, including the Columbia Wetlands Wildlife Management Area. Trail development may be restricted in these areas.
- 08 Private property issues and water source concerns in the area are creating conflict and threaten potential future trails in the area.
- 09 The Blaeberry FSR is in poor condition and impassable by vehicle at Kilometer 28, preventing access to the upper Blaeberry.
- 10 The area around the Howse Pass is identified as sensitive to alteration. Increased use in the area could threaten the area further.



CLIENT
Columbia Shuswap Regional District
555 Harbourfront Drive NE
PO Box 978
Salmon Arm, BC V1E 4P1

ISSUE
2017/05/31

RE-ISSUE
2018/05/03

DRAWN BY
FB & JJ

SHEET SIZE
24 X 36 Inches

COLUMBIA SHUSWAP REGIONAL DISTRICT AREA A TRAILS STRAEGTY



STRENGTHS, WEAKNESSES, OPPORTUNITIES & THREATS MAP

Kicking Horse Mountain Resort Area

STRENGTHS (OF EXISTING TRAILS)

- 01 The Dawn Mountain Nordic Trails are well managed by the Golden Nordic Ski Club. The area has both nordic skiing and snowshoeing trails
- 02 Kicking Horse Mountain Resort offers mountain biking and recreational amenities during winter and summer months. Backcountry skiing is also access from the resort to the North, South, and Southwest aspects.
- 03 The CBTTrail area is adjacent to this area and is an established trail area
- 04 The Moonraker trail area is adjacent to this area and is an established trail area

WEAKNESSES (WITHIN EXISTING TRAILS SYSTEM)

- 01 The trail from KHMR to Holt Lake is difficult and travels through sensitive habitat. This presents SAR issues, and results in higher environmental degradation.
- 02 People enter the Canyon Creek side of the mountain each year unprepared and this results in semi-regular SAR activity.
- 03 The T4 trail is an existing unsanctioned trail accessed from KHMR. The trail sees heavy use. It isn't built to Provincial or IMBA standards and sees environmental damage as a result. It hosts several tenured recreational races each year. If closed it would likely still see a lot of informal trail use.
- 04 Summer public access to the top of Whitetooth Peak is difficult due to the KHMR tenure and difficult terrain. There are currently no hiking trails from the resort base to the peak.
- 05 Scalli Mag Trail requires sustainability and drainage improvements.
- 06 There is a demand for better summer and winter access between the Moonraker and Gorman area via the 2% road for both motorized and non-motorized users.

OPPORTUNITIES (EXTERNAL THAT MAY ENHANCE TRAILS)

- 01 Opportunity to better connect KHMR to the Town of Golden through off-street trails
- 02 Opportunity to better connect KHMR to the Moonraker Trail Network

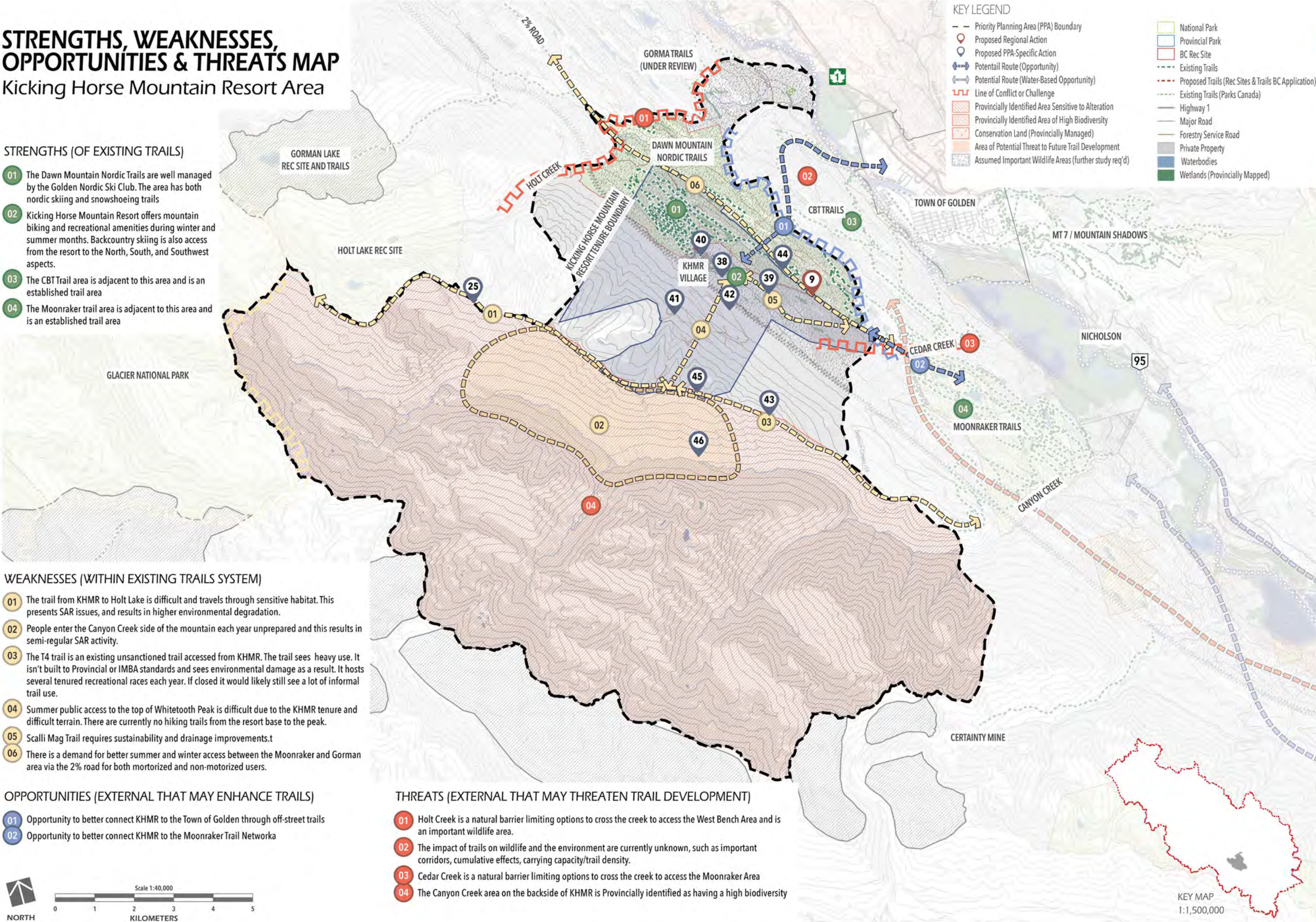
THREATS (EXTERNAL THAT MAY THREATEN TRAIL DEVELOPMENT)

- 01 Holt Creek is a natural barrier limiting options to cross the creek to access the West Bench Area and is an important wildlife area.
- 02 The impact of trails on wildlife and the environment are currently unknown, such as important corridors, cumulative effects, carrying capacity/trail density.
- 03 Cedar Creek is a natural barrier limiting options to cross the creek to access the Moonraker Area
- 04 The Canyon Creek area on the backside of KHMR is Provincially identified as having a high biodiversity



KEY LEGEND

- Priority Planning Area (PPA) Boundary
- Proposed Regional Action
- Proposed PPA-Specific Action
- Potential Route (Opportunity)
- Potential Route (Water-Based Opportunity)
- Line of Conflict or Challenge
- Provincially Identified Area Sensitive to Alteration
- Provincially Identified Area of High Biodiversity
- Conservation Land (Provincially Managed)
- Area of Potential Threat to Future Trail Development
- Assumed Important Wildlife Areas (further study req'd)
- National Park
- Provincial Park
- BC Rec Site
- Existing Trails
- Proposed Trails (Rec Sites & Trails BC Application)
- Existing Trails (Parks Canada)
- Highway 1
- Major Road
- Forestry Service Road
- Private Property
- Waterbodies
- Wetlands (Provincially Mapped)



KEY MAP
1:1,500,000



CLIENT
Columbia Shuswap Regional District
555 Harbourfront Drive NE
PO Box 978
Salmon Arm, BC V1E 4P1

ISSUE
2017/05/31

RE-ISSUE
2018/05/03

DRAWN BY
FB & JJ

SHEET SIZE
24 X 36 inches

COLUMBIA SHUSWAP REGIONAL
DISTRICT AREA A TRAILS STRAEGTY



STRENGTHS, WEAKNESSES, OPPORTUNITIES & THREATS MAP

Moonraker Area

STRENGTHS (OF EXISTING TRAILS)

- 01 The Dawn Mountain Nordic Trails are well managed by the Golden Nordic Ski Club. The area has both nordic skiing and snowshoeing trails
- 02 Kicking Horse Mountain Resort offers mountain biking and recreational amenities during winter and summer months. Backcountry skiing is also access from the resort to the North, South, and Southeast aspects.
- 03 The CBT Trail is an important non-motorized connection between the Town of Golden and the CBT, Moonraker and KHMR Trails & Recreation Areas.
- 04 The Town of Golden has a strong representation of trail advocates and organizations that contribute to an already strong and diverse trail network throughout CSRD Area A.
- 05 The Moonraker trail area is managed by the Golden Cycling Club through a Provincial Section 56 designation. It is a popular trail area in the Golden Area. There are also camping and other recreation opportunities that appeal to the broader community and tourists.
- 06 Memorandum of Understandings (MOU) exist for sanctioned trails between the Woodlot Owner, Trail Organization, and BC Rec Sites and Trails. These MOU's provide a framework for joint management of sanctioned recreation trails while ensuring timber harvesting rights and recreation values are accommodated.

WEAKNESSES (WITHIN EXISTING TRAILS SYSTEM)

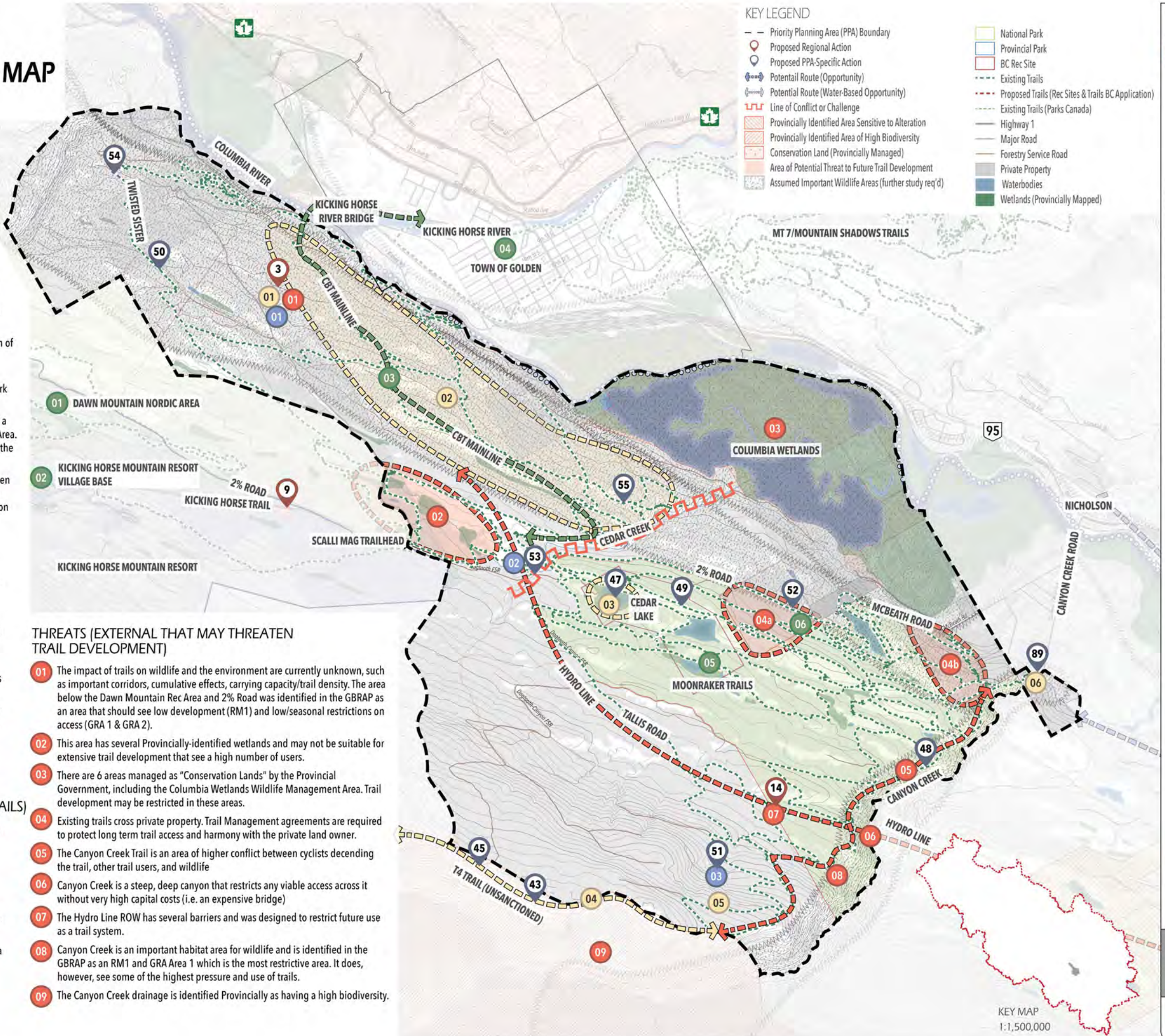
- 01 There is a conflict between the desire to increase the trail network in this area and the lack of knowledge of wildlife habitat and corridors.
- 02 An area of high wildlife encounters by trail users.
- 03 Area of sensitive vegetation and wetland fen being damaged by informal trail use.
- 04 The T4 trail is an existing unsanctioned trail accessed from KHMR. The trail sees heavy use. It isn't built to Provincial or IMBA standards and sees environmental damage as a result. It hosts several tenured recreational races each year. If closed it would likely still see a lot of informal trail use.
- 05 The Moonraker trail network has many intermediate and beginner trails, but few advanced trails.
- 06 There is an informal trailhead at the end of the Swamp Donkey trail and Canyon Creek Rd. This has the potential to create conflict between trail users and private land-owners.

OPPORTUNITIES (EXTERNAL THAT MAY ENHANCE TRAILS)

- 01 Heritage, culture and ares important to local First Nations aren't currently well documented or understood. However, the Shuswap First Nations is interested in partnering with local organizations to recognize and celebrate First Nations history in the area.
- 02 The existing roadbed of McBeath & 2% Road present an opportunity to create a trail connection that could better connect Nicholson, the Moonraker, KHMR, Dawn Mountain and Holt/Gorman areas together. The GBRAP supports this for both motorized and non-motorized use.
- 03 The potential to develop advanced mountain bike trails (black) in the area above Talus FSR.

THREATS (EXTERNAL THAT MAY THREATEN TRAIL DEVELOPMENT)

- 01 The impact of trails on wildlife and the environment are currently unknown, such as important corridors, cumulative effects, carrying capacity/trail density. The area below the Dawn Mountain Rec Area and 2% Road was identified in the GBRAP as an area that should see low development (RM1) and low/seasonal restrictions on access (GRA 1 & GRA 2).
- 02 This area has several Provincially-identified wetlands and may not be suitable for extensive trail development that see a high number of users.
- 03 There are 6 areas managed as "Conservation Lands" by the Provincial Government, including the Columbia Wetlands Wildlife Management Area. Trail development may be restricted in these areas.
- 04 Existing trails cross private property. Trail Management agreements are required to protect long term trail access and harmony with the private land owner.
- 05 The Canyon Creek Trail is an area of higher conflict between cyclists descending the trail, other trail users, and wildlife
- 06 Canyon Creek is a steep, deep canyon that restricts any viable access across it without very high capital costs (i.e. an expensive bridge)
- 07 The Hydro Line ROW has several barriers and was designed to restrict future use as a trail system.
- 08 Canyon Creek is an important habitat area for wildlife and is identified in the GBRAP as an RM1 and GRA Area 1 which is the most restrictive area. It does, however, see some of the highest pressure and use of trails.
- 09 The Canyon Creek drainage is identified Provincially as having a high biodiversity.



STRENGTHS, WEAKNESSES, OPPORTUNITIES & THREATS MAP

Golden and Mount 7/Mountain Shadows

KEY LEGEND

- Priority Planning Area (PPA) Boundary
- Proposed Regional Action
- Proposed PPA-Specific Action
- Potential Route (Opportunity)
- Potential Route (Water-Based Opportunity)
- Line of Conflict or Challenge
- Provincially Identified Area Sensitive to Alteration
- Provincially Identified Area of High Biodiversity
- Conservation Land (Provincially Managed)
- Area of Potential Threat to Future Trail Development
- Assumed Important Wildlife Areas (further study req'd)
- National Park
- Provincial Park
- BC Rec Site
- Existing Trails
- Proposed Trails (Rec Sites & Trails BC Application)
- Existing Trails (Parks Canada)
- Highway 1
- Major Road
- Forestry Service Road
- Private Property
- Waterbodies
- Wetlands (Provincially Mapped)

KEY MAP
1:1,500,000

STRENGTHS (OF EXISTING TRAILS)

- 01 The Rotary Trail provides trail access for the highest number of potential user groups.
- 02 The Kicking Horse Pedestrian Bridge provides pedestrian access across the Kicking Horse River.
- 03 The Golden recreation hub provide a variety of recreation and trail opportunities.
- 04 Memorandum of Understandings (MOU) exist for sanctioned trails between the Woodlot Owner, Trail Organization, and BC Rec Sites and Trails. These MOU's provide a framework for joint management of sanctioned recreation trails while ensuring timber harvesting rights and recreation values are accommodated.

WEAKNESSES (WITHIN EXISTING TRAILS SYSTEM)

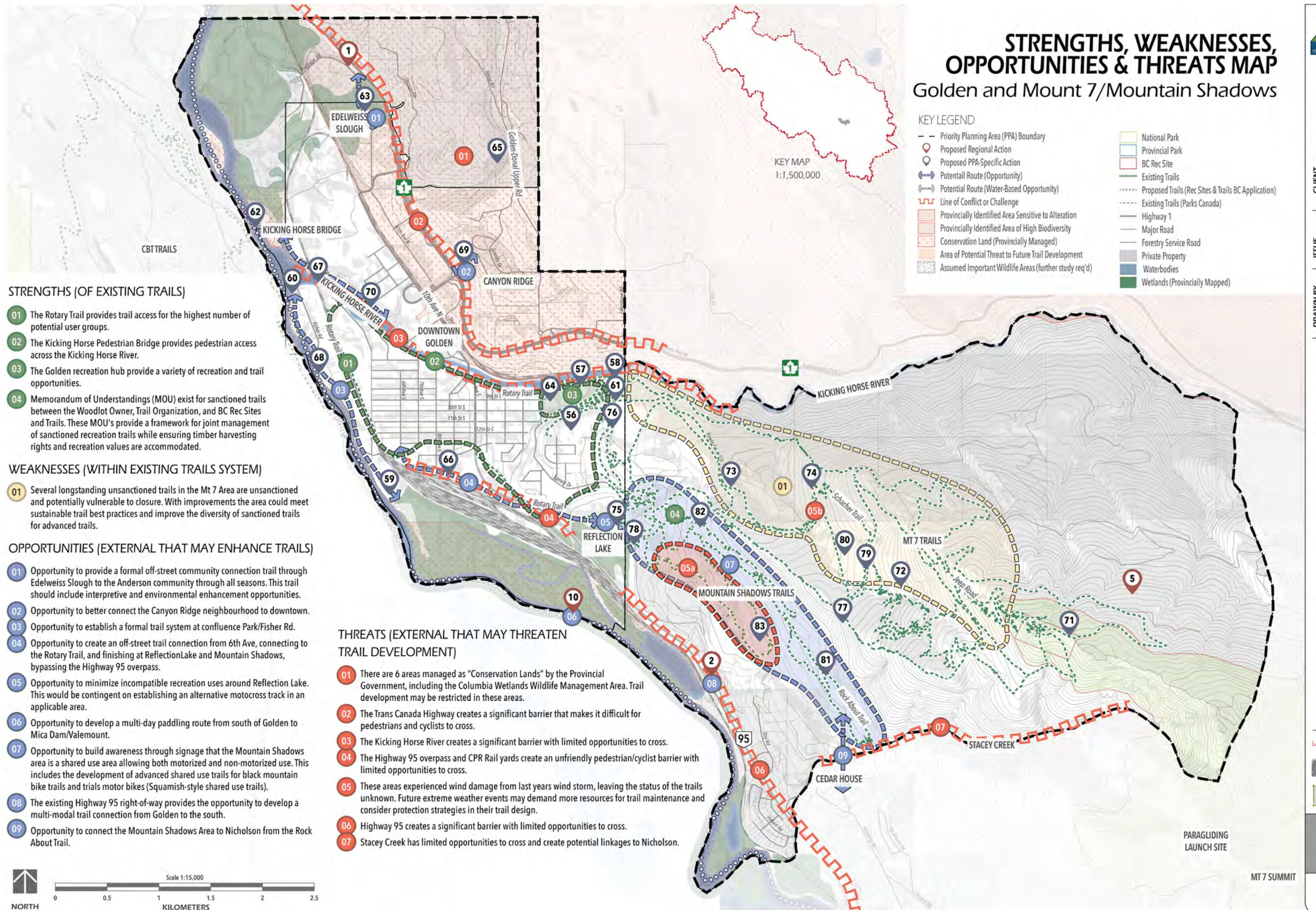
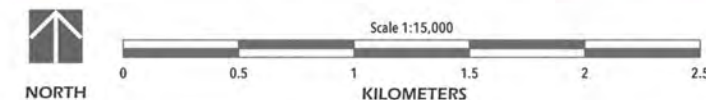
- 01 Several longstanding unsanctioned trails in the Mt 7 Area are unsanctioned and potentially vulnerable to closure. With improvements the area could meet sustainable trail best practices and improve the diversity of sanctioned trails for advanced trails.

OPPORTUNITIES (EXTERNAL THAT MAY ENHANCE TRAILS)

- 01 Opportunity to provide a formal off-street community connection trail through Edelweiss Slough to the Anderson community through all seasons. This trail should include interpretive and environmental enhancement opportunities.
- 02 Opportunity to better connect the Canyon Ridge neighbourhood to downtown.
- 03 Opportunity to establish a formal trail system at confluence Park/Fisher Rd.
- 04 Opportunity to create an off-street trail connection from 6th Ave, connecting to the Rotary Trail, and finishing at ReflectionLake and Mountain Shadows, bypassing the Highway 95 overpass.
- 05 Opportunity to minimize incompatible recreation uses around Reflection Lake. This would be contingent on establishing an alternative motocross track in an applicable area.
- 06 Opportunity to develop a multi-day paddling route from south of Golden to Mica Dam/Valemount.
- 07 Opportunity to build awareness through signage that the Mountain Shadows area is a shared use area allowing both motorized and non-motorized use. This includes the development of advanced shared use trails for black mountain bike trails and trials motor bikes (Squamish-style shared use trails).
- 08 The existing Highway 95 right-of-way provides the opportunity to develop a multi-modal trail connection from Golden to the south.
- 09 Opportunity to connect the Mountain Shadows Area to Nicholson from the Rock About Trail.

THREATS (EXTERNAL THAT MAY THREATEN TRAIL DEVELOPMENT)

- 01 There are 6 areas managed as "Conservation Lands" by the Provincial Government, including the Columbia Wetlands Wildlife Management Area. Trail development may be restricted in these areas.
- 02 The Trans Canada Highway creates a significant barrier that makes it difficult for pedestrians and cyclists to cross.
- 03 The Kicking Horse River creates a significant barrier with limited opportunities to cross.
- 04 The Highway 95 overpass and CPR Rail yards create an unfriendly pedestrian/cyclist barrier with limited opportunities to cross.
- 05 These areas experienced wind damage from last years wind storm, leaving the status of the trails unknown. Future extreme weather events may demand more resources for trail maintenance and consider protection strategies in their trail design.
- 06 Highway 95 creates a significant barrier with limited opportunities to cross.
- 07 Stacey Creek has limited opportunities to cross and create potential linkages to Nicholson.

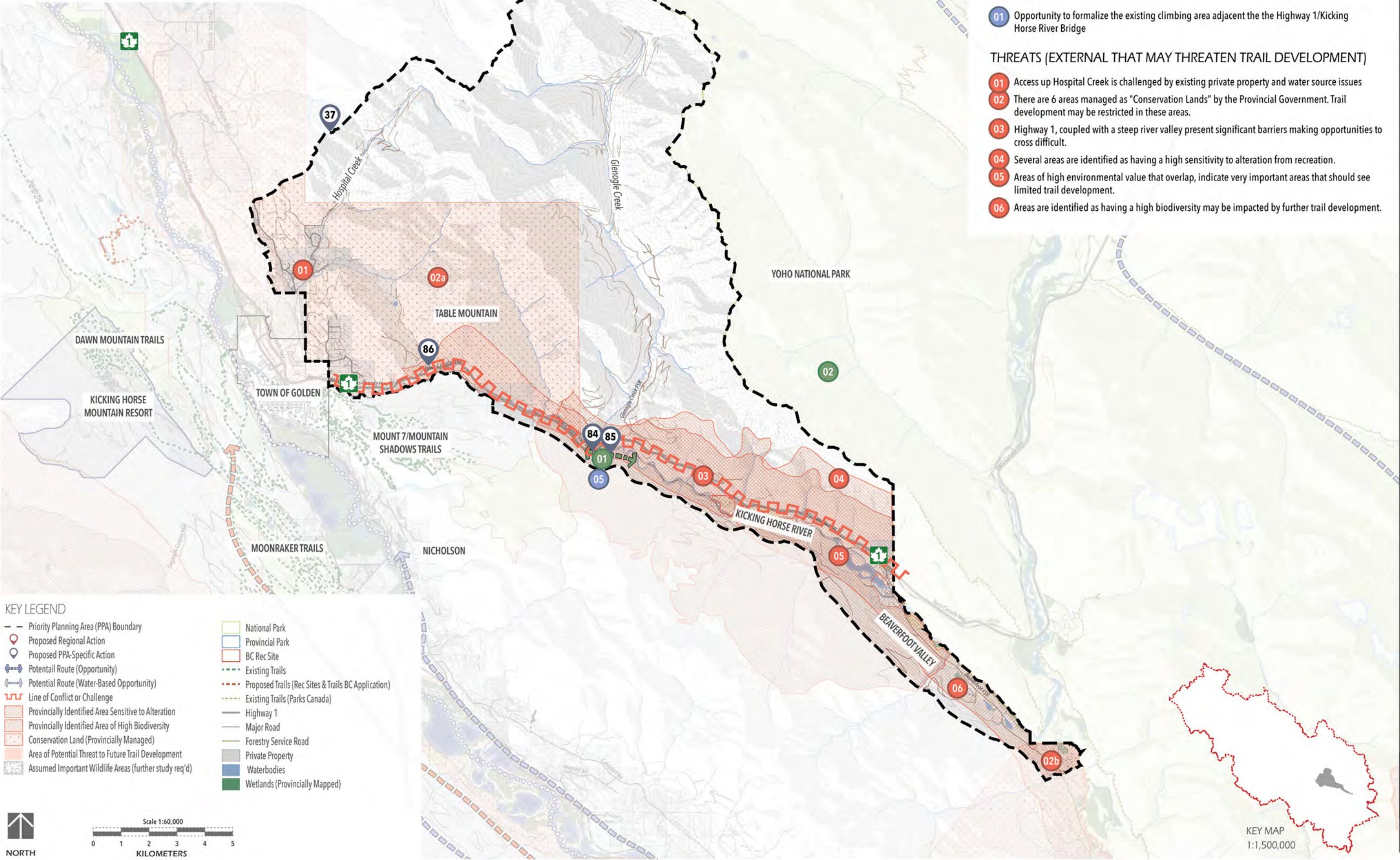


PARAGLIDING
LAUNCH SITE

MT 7 SUMMIT

STRENGTHS, WEAKNESSES, OPPORTUNITIES & THREATS MAP

Glenogle and Kicking Horse Areas



STRENGTHS (OF EXISTING TRAILS)

- 01 The old highway provides access opportunities using existing infrastructure. Any proposals would be subject to existing zoning around Highway 1.
- 02 Yoho NP borders the area and offers the potential to support CSRD Trails.

OPPORTUNITIES (EXTERNAL THAT MAY ENHANCE TRAILS)

- 01 Opportunity to formalize the existing climbing area adjacent the the Highway 1/Kicking Horse River Bridge

THREATS (EXTERNAL THAT MAY THREATEN TRAIL DEVELOPMENT)

- 01 Access up Hospital Creek is challenged by existing private property and water source issues
- 02 There are 6 areas managed as "Conservation Lands" by the Provincial Government. Trail development may be restricted in these areas.
- 03 Highway 1, coupled with a steep river valley present significant barriers making opportunities to cross difficult.
- 04 Several areas are identified as having a high sensitivity to alteration from recreation.
- 05 Areas of high environmental value that overlap, indicate very important areas that should see limited trail development.
- 06 Areas are identified as having a high biodiversity may be impacted by further trail development.



CLIENT
Columbia Shuswap Regional District
555 Harbourfront Drive NE
PO Box 978
Salmon Arm, BC V1E 4P1

ISSUE
2017/05/31

RE-ISSUE
2018/05/03

DRAWN BY
FB & JJ

SHEET SIZE
24 X 36 inches

COLUMBIA SHUSWAP REGIONAL
DISTRICT AREA A TRAILS STRAEGTY



STRENGTHS, WEAKNESSES, OPPORTUNITIES & THREATS MAP

Nicholson and Kapristo Areas

STRENGTHS (OF EXISTING TRAILS)

- 01 The bridge over the Columbia River provides access from Nicholson to the Moonraker Trails with the potential for better river access if it can be done in compliance with the Columbia Wetlands Management Plan.
- 02 Existing forestry service roads could be used to establish a formal shared use motorized trail network south, without having to build new trails. This could be done with signage and wayfinding, linking Golden and Nicholson with communities further south.

WEAKNESSES (WITHIN EXISTING TRAILS SYSTEM)

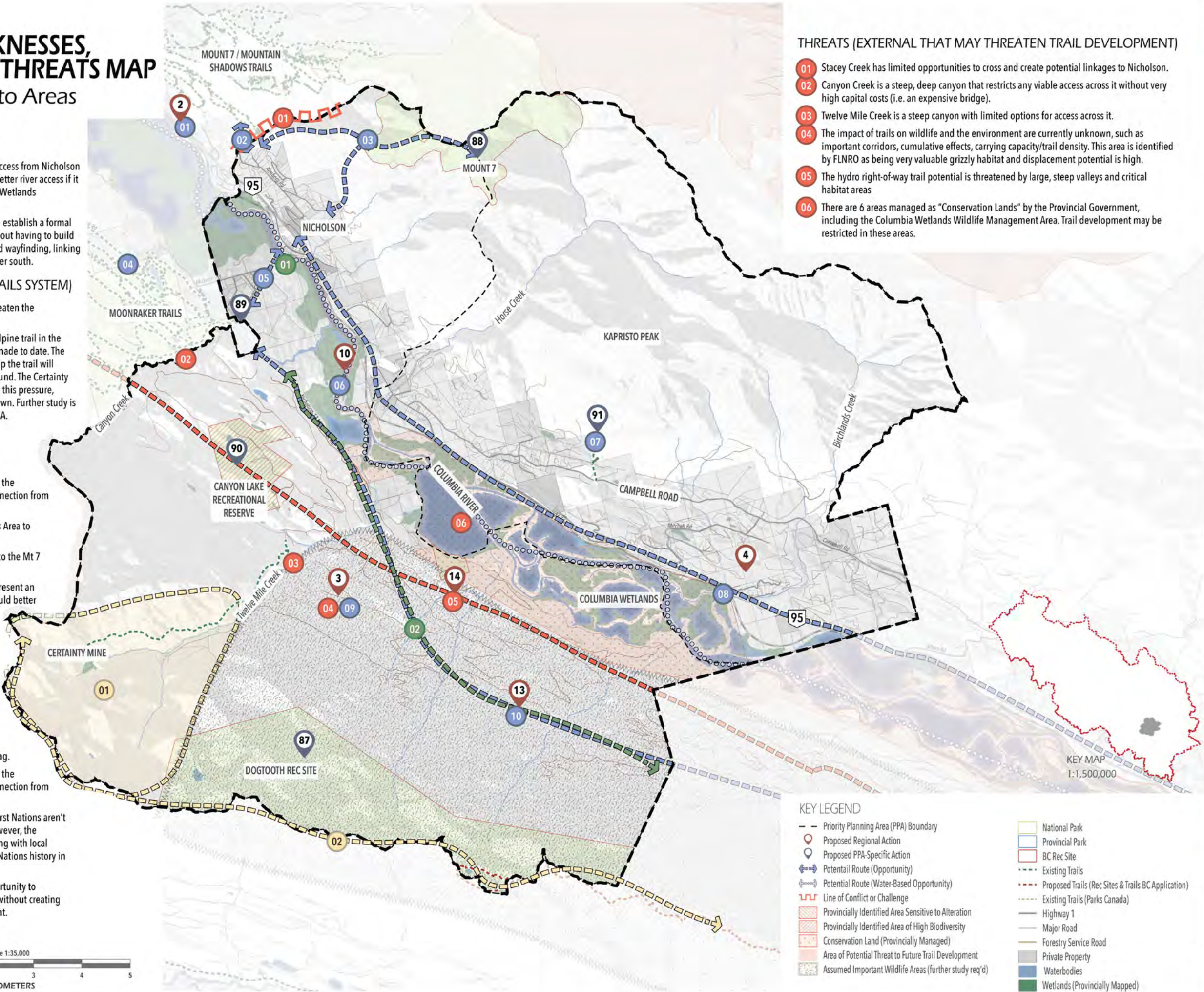
- 01 Existing informal trail use and shale riding threaten the environmental integrity of the area.
- 02 There is a strong demand to locate a premier alpine trail in the area, with multiple unsuccessful applications made to date. The demand for this is high and pressure to develop the trail will remain high if a suitable location cannot be found. The Certainty Mine / Hobo Creek area is one that is receiving this pressure, though the impact of this kind of trail is unknown. Further study is required for finding a suitable location in Area A.

OPPORTUNITIES (EXTERNAL THAT MAY ENHANCE TRAILS)

- 01 The existing Highway 95 right-of-way provides the opportunity to develop a multi-modal trail connection from Golden to Nicholson.
- 02 Opportunity to connect the Mountain Shadows Area to Nicholson from the Rock About Trail.
- 03 Opportunity to develop a trail from Nicholson to the Mt 7 Summit.
- 04 The existing roadbed of McBeath & 2% Road present an opportunity to create a trail connection that could better connect Nicholson, the Moonraker, KHMR, Dawn Mountain and Holt/Gorman areas together. The GBRAP supports this for both motorized and non-motorized use.
- 05 Opportunity to better connect Nicholson to the Mooraker Trails and proposed FSR Shared Use/Motorized network.
- 06 Opportunity to develop a multi-day paddling route from south of Golden to Mica Dam/Valemount.
- 07 Establish a formal climbing area at Kapristo Crag.
- 08 The existing Highway 95 right-of-way provides the opportunity to develop a multi-modal trail connection from Nicholson to Parsont.
- 09 Heritage, culture and areas important to local First Nations aren't currently well documented or understood. However, the Shuswap First Nations is interested in partnering with local organizations to recognize and celebrate First Nations history in the area.
- 10 Existing forestry service roads provide an opportunity to develop a motorized trail system to the south without creating further impact on the surrounding environment.

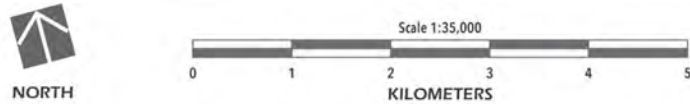
THREATS (EXTERNAL THAT MAY THREATEN TRAIL DEVELOPMENT)

- 01 Stacey Creek has limited opportunities to cross and create potential linkages to Nicholson.
- 02 Canyon Creek is a steep, deep canyon that restricts any viable access across it without very high capital costs (i.e. an expensive bridge).
- 03 Twelve Mile Creek is a steep canyon with limited options for access across it.
- 04 The impact of trails on wildlife and the environment are currently unknown, such as important corridors, cumulative effects, carrying capacity/trail density. This area is identified by FLNRO as being very valuable grizzly habitat and displacement potential is high.
- 05 The hydro right-of-way trail potential is threatened by large, steep valleys and critical habitat areas.
- 06 There are 6 areas managed as "Conservation Lands" by the Provincial Government, including the Columbia Wetlands Wildlife Management Area. Trail development may be restricted in these areas.



KEY LEGEND

- Priority Planning Area (PPA) Boundary
- Proposed Regional Action
- Proposed PPA-Specific Action
- Potential Route (Opportunity)
- Potential Route (Water-Based Opportunity)
- Line of Conflict or Challenge
- Provincially Identified Area Sensitive to Alteration
- Provincially Identified Area of High Biodiversity
- Conservation Land (Provincially Managed)
- Area of Potential Threat to Future Trail Development
- Assumed Important Wildlife Areas (further study req'd)
- National Park
- Provincial Park
- BC Rec Site
- Existing Trails
- Proposed Trails (Rec Sites & Trails BC Application)
- Existing Trails (Parks Canada)
- Highway 1
- Major Road
- Forestry Service Road
- Private Property
- Waterbodies
- Wetlands (Provincially Mapped)



CLIENT
Columbia Shuswap Regional District
555 Harbourfront Drive NE
PO Box 978
Salmon Arm, BC V1E 4P1

ISSUE
2017/05/31

RE-ISSUE
2018/05/03

DRAWN BY
FB & JJ

SHEET SIZE
24 X 36 inches

COLUMBIA SHUSWAP REGIONAL DISTRICT AREA A TRAILS STRATEGY



STRENGTHS, WEAKNESSES, OPPORTUNITIES & THREATS MAP
Parson, Moose & Spillimacheen Area

STRENGTHS (OF EXISTING TRAILS)

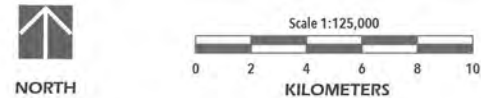
- 01 Glacier NP borders the area and offers the potential to support CSRD Trails.
- 02 The Spillimacheen FSR provides an opportunity to develop shared use/motorized trails using existing infrastructure.
- 03 Bugaboo Provincial Park is a well known recreation area that offers the potential to support CSRD Trails.
- 04 Yoho NP borders the area and offers the potential to support CSRD Trails.
- 05 Kootenay NP borders the area and offers the potential to support CSRD Trails.

WEAKNESSES (WITHIN EXISTING TRAILS SYSTEM)

- 01 Glacier NP has experienced encroachment into the park from snowmobiles. Snowmobile use expansion could further exacerbate this issue.
- 02 There is a strong demand to locate a premier alpine trail in the area, with multiple unsuccessful applications made to date. The demand for this is high and pressure to develop the trail will remain high if a suitable location cannot be found. The Certainty Mine / Hobo Creek area is one that is receiving this pressure, though the impact of this kind of trail is unknown. Further study is required for finding a suitable location in Area A.
- 03 The trailhead for the Silent Pass Snowmobile Area is at 6km and there is no snow clearing beyond that. The parking area and trailhead could use improvements.

KEY LEGEND

- Priority Planning Area (PPA) Boundary
- Proposed Regional Action
- Proposed PPA-Specific Action
- Potential Route (Opportunity)
- Potential Route (Water-Based Opportunity)
- Line of Conflict or Challenge
- Provincially Identified Area Sensitive to Alteration
- Provincially Identified Area of High Biodiversity
- Conservation Land (Provincially Managed)
- Area of Potential Threat to Future Trail Development
- Assumed Important Wildlife Areas (further study req'd)
- Section 58 - Recreation Orders
- National Park
- Provincial Park
- BC Rec Site
- Existing Trails
- Proposed Trails (Rec Sites & Trails BC Application)
- Existing Trails (Parks Canada)
- Highway 1
- Major Road
- Forestry Service Road
- Private Property
- Waterbodies
- Wetlands (Provincially Mapped)



THREATS (EXTERNAL THAT MAY THREATEN TRAIL DEVELOPMENT)

- 01 There are several Section 58 Recreational Orders along the border of Canyon Creek and Glacier NP restricting Snowmobile Use.
- 02 Travel to these areas require long drives on FSRs and they are some of the most remote in Area A.
- 03 The hydro right-of-way trail potential is threatened by large, steep valleys and critical habitat areas.
- 04 The impact of trails on wildlife and the environment are currently unknown, such as important corridors, cumulative effects, carrying capacity/trail density.
- 05 Several areas are identified as having a high sensitivity to alteration from recreation.
- 06 There are 6 areas managed as "Conservation Lands" by the Provincial Government, including the Columbia Wetlands Wildlife Management Area. Trail development may be restricted in these areas.
- 07 Areas are identified as having a high biodiversity may be impacted by further trail development.

OPPORTUNITIES (EXTERNAL THAT MAY ENHANCE TRAILS)

- 01 Opportunity to connect into Glacier NP into the Copperstain Trails.
- 02 Opportunity to connect into Glacier NP into the Beaver Valley Trails.
- 03 This is an area experiencing recreation pressure and is an opportunity to look at environmental carrying capacity through a management plan
- 04 Heritage, culture and ares important to local First Nations aren't currently well documented or understood. However, the Shuswap First Nations is interested in partnering with local organizations to recognize and celebrate First Nations history in the area.
- 05 The existing Highway 95 right-of-way provides the opportunity to develop a multi-modal trail connection from Nicholson to Parson.
- 06 Opportunity to develop a multi-day paddling route from south of Golden to Mica Dam/Valemount
- 07 Existing forestry service roads provide an opportunity to develop a motorized trail system to the south without creating further impact on the surrounding environment.
- 08 The existing Highway 95 right-of-way provides the opportunity to develop a multi-modal trail connection from Nicholson to Parson.
- 09 Opportunity to re-establish the Harrogate Pass Heritage Trail.
- 10 Opportunity to connect into Yoho NP into the Ice River Trails.
- 11 Opportunity to connect into Kootenay NP and the Historical Great Divide Trail.

KEY MAP
1:1,500,000



CLIENT
Columbia Shuswap Regional District
555 Harbourfront Drive NE
PO Box 978
Salmon Arm, BC V1E 4P1

ISSUE
2017/05/31

DRAWN BY
FB & JJ

RE-ISSUE
2018/05/03

SHEET SIZE
24 X 36 inches

COLUMBIA SHUSWAP REGIONAL
DISTRICT AREA A TRAILS STRAEGTY





04 DECISION MAKING MATRIX

Building upon the SWOT Mapping Analysis, the needs assessment list is further scrutinized through a decision-making matrix, that allows for multiple factors (cost, location, constructibility, public support, environmental impact, cultural factors, funding opportunities, etc.) to be applied to the evaluation and ranking of each list item. This allows the project team to prioritize and rank initiatives in an objective manner that is transparent and defensible. The result of the SWOT Mapping Analysis and Decision Making Matrix is a short list of initiatives to be formulated into phasing opportunities over a ten-year period. This short list is presented to the Client and Working Group for within the Trail Strategy DRAFT Technical Memoranda #3 for feedback and approval. Once the short list is finalized, timelines, cost summaries, design considerations, legislative requirements, best management practices, maintenance projections, and funding opportunities will be incorporated into the summary information for each of the identified projects.

The Evaluation Criteria for the Decision Making Matrix is as follows:

DECISION MAKING MATRIX EVALUATION CRITERIA

GBRAP COMPATIBILITY (SOCIAL/ENVIRONMENTAL/ECONOMIC/CULTURAL)

- A. Consistent with GBRAP (Golden Backcountry Recreation Access Plan, 2002)
- B. Requires consultation with GBRAP (Golden Backcountry Recreation Access Committee)
- C. Conflicts with GBRAP

10 = GBRAP Compatible, no issues

5 = May require review from GBRAP Committee

0 = Not compatible with GBRAP, contradicts

ENVIRONMENTAL	
A.	Environmental – concerns or mitigation required
B.	Red/Blue/Rare Species
C.	High Biodiversity Emphasis Option – GBRAP Landscape Units
D.	Sensitivity to alteration
E.	Opportunity for environmental improvements
F.	Incompatible use creating environmental damage
G.	Provincial or Federal Restrictions, Notations, etc.
10 = Minimal environmental concerns or project would improve environmental conditions	
0 = Severe environmental concerns	
ECONOMIC	
A.	Capital Cost
B.	Operating cost
C.	External funding available to offset costs
D.	Catalyst for other actions, partnerships, and/or funding
10 = No concerns over attaining funding capital or operating costs	
0 = Major concerns over obtaining funding or funding sustainability	
SOCIAL	
A.	Availability and willingness of an organization to be project champion or leader
B.	Actionable – clearly defined
C.	Efficient – the strategy addresses many goals at once
E.	Effective – the strategy has a high impact on the goals – it is crucial for the future
F.	Public Safety – i.e. Search and Rescue Access
10 = Organization or champion available and capable, clearly defined goals and objectives	
0 = Lacking an available champion, not clearly defined goals and objectives	
CULTURAL	
A.	Indigenous support or conflict
B.	Existing community and stakeholder support
C.	Potential to garner commitment from many people/user groups
D.	Land ownership or tenure holder coordination required
10 = Indigenous and Community support, no opposition, strong commitment	
5 = Cultural Heritage Assessment required – Archaeological, Heritage, Medicinal	
0 = Opposition from multiple groups and lack of overall support	

TABLE 1: DECISION MAKING MATRIX

CSRD AREA A: REGIONAL TRAILS STRATEGY DECISION-MAKING MATRIX											
Action Number	Description	PPA	PPA Name	Combined Score	GBRAP (Env, Social, Economic, Cultural)	Environmental	Economic	Social	Cultural	Term	Notes
					20	20	20	20	20		
					10 - GBRAP Compatible	10 - greatest	10 - greatest	10 - greatest	10 - greatest		
PPA - 1: REGIONAL LINKAGES											
1	STRATEGIC INITIATIVE: Form Trails Alliance for Golden and Area A	1	Regional	94	10	10	9	9	9	Short	
2	Complete a phased feasibility study for a multi-modal trail within the Highway 95 ROW from Golden to Nicholson (Phase 1).	1	Regional	94	10	10	8	10	9	Med	If feasible undertake fundraising, detailed design, and construction for Phase 1. Coordinate with Columbia Valley Greenways Trail Alliance. Golden to Habart/Nicholson Multi-Modal Legacy Trail
3	STRATEGIC INITIATIVE: West Bench Environmental Impact/Cultural Heritage Study	1	Regional	92	10	10	9	8	9	Short	Cultural Heritage Study in coordination with the Shuswap Territorial Land Stewardship Team
4	Complete a phased feasibility study for a multi-modal trail within the Highway 95 ROW from Nicholson to Parson (Phase 2).	1	Regional	90	10	8	8	10	9	Long	If feasible undertake fundraising, detailed design, and construction for Phase 2. Coordinate with Columbia Valley Greenways Trail Alliance. Nicholson to Parson Multi-Modal Legacy Trail
5	Funding for Asset Management, Trail Maintenance and Rehabilitation	1	Regional	88	10	9	8	9	8		Current Weakness - At present grant funding and municipal funding are focused toward new trail development while local organizations struggle to secure funding for regular trail maintenance and rehabilitation. There is an opportunity to revise funding policies to enable capitol for the trail alliance or individual organizations to undertake asset management analysis and the establishment a paid trail crew to focus on maintaining and improving established trails while closing and rehabilitating trails no longer being used.
6	Work with Multiple Stakeholders to Re-Establish the David Thompson Heritage Trail and Access to Mummery Glacier	1	Regional	88	8	8	9	10	9	Immediate	Low use levels, wildlife corridor, Indigenous values, Non-motorized only. Partially funded through multiple grant streams for th Great Divide Trail Association. Multiple project phases including: Construct new bridge at Lambe Creek, Mummery Glacier trail improvements and signage, Ensign Creek FSR, Howe's Pass trail improvements, cable car over Cairns Creek, Cairns Creek Rec Site improvements. Long term access improvements to access road requires partnership agreements.
7	Complete a phased feasibility study for a multi-modal trail within the Highway 95 ROW from Parson/South (Phase 3).	1	Regional	86	10	8	7	10	8	Long	If feasible undertake fundraising, detailed design, and construction for Phase 3. Coordinate with Columbia Valley Greenways Trail Alliance. Parson South Multi-Modal Legacy Trail
8	Work with Parks Canada to Re-Establish the Amiskwi Pass Trail	1	Regional	84	10	8	8	9	7	Med	Coordination with Tenure Holder required, motorized concerns summer and winter
9	STRATEGIC INITIATIVES: Establish priorities/policies through the Trails Alliance to refine the long term vision on 3rd party races, incorporating the results of cumulative effects modeling.	1	Regional	84	10	9	8	8	7	Short	
10	Work with BC Rec Sites and Trails to Identify Potential Camping Spots for Multi-Day Paddling Trips	1	Regional	76	10	5	10	6	7	Short	A system of camping areas and rest stops that can by used by multi-day paddlers. Contingent on the Columbia Wetlands Wildlife Management Area (WMA) Management Plan currently in progress

TABLE 1: DECISION MAKING MATRIX

CSRD AREA A: REGIONAL TRAILS STRATEGY DECISION-MAKING MATRIX											
Action Number	Description	PPA	PPA Name	Combined Score	GBRAP (Env, Social, Economic, Cultural)	Environmental	Economic	Social	Cultural	Term	Notes
					20	20	20	20	20		
					10 - GBRAP Compatible	10 - greatest	10 - greatest	10 - greatest	10 - greatest		
11	Work with Parks Canada to Re-Establish Athabasca Pass Heritage Trail	1	Regional	72	10	9	4	6	7	Long	Restore the Athabasca Pass Heritage Trail and connect as part of a hiking/paddling route through CSRD Area A and Jasper NP.
12	Re-Establish the Harrogate Pass Historical Trail to Dainard Lake	1	Regional	72	10	7	7	5	7	Long	
13	Explore Possible Motorized Trail Network Using Existing FSRs from Nicholson - South	1	Regional	72	10	7	7	7	5	Short	Wayfinding improvements through signage, electronic application, updates to Backcountry Maps.
14	Conduct a Motorized Hydro Line Feasibility Study: 12 Mile - South	1	Regional	30	1	1	3	5	5	Long	Feasibility study for motorized access in powerline ROW. Require buy-in from BC Hydro.
PPA - 2: KINBASKET											
15	Work with BC Rec Sites and Trails to formalize the Help Lake/Blackwater Climbing Area, Trails, and Staging Area	2	Kinbasket	86	10	8	9	8	8	Immed	Help Lake Climbing Area. Columbia Valley Climbing Society has received partial funding through 2018 Grant funding
16	STRATEGIC INITIATIVES: Complete a Kinbasket Heritage Inventory Assessment Study	2	Kinbasket	84	10	10	9	5	8	Short	Lead: Shuswap Territorial Stewardship Team
17	Work with BC Rec Sites and Trails to Establish and Sign River Access for Small Boats at Wisted Creek or Beaver Mouth Rec Site	2	Kinbasket	82	10	9	8	7	7	Med	Canoe Access at either Wisted Creek or Beaver Mouth Rec Areas
18	STRATEGIC INITIATIVES: Identify and Map Wilderness Preservation Zones in the Kinbasket area.	2	Kinbasket	60	8	10	3	5	4	Medium	
PPA - 3: DONALD/BLEWATER											
19	STRATEGIC INITIATIVES: Explore the Long Term feasibility of developing a Multi-Modal Trail connection from Golden to Donald.	3	Donald/Blewwater	78	10	8	7	7	7	Long	If feasible undertake fundraising, detailed design, and construction. Coordinate with Columbia Valley Greenways Trail Alliance.
20	STRATEGIC INITIATIVES: Explore Potential Boat Launch Bleway Connection Locations	3	Donald Blewwater	70	10	7	8	5	5	Med	
PPA - 4: QUARTZ/GORMAN											
21	Complete/On-going Road Access Improvements to Gorman Lake and Complete Trailhead Improvements	4	Quartz/Gorman	88	10	9	8	8	9	Short	Opportunities for access improvements and funding through Tourism Infrastructure, Grants, and collaboration with Shuswap Band. Collaboration with Tenure holders required. Incorporate Signage for Allowed Uses (Climbing, biking, motorized, etc.) at new Trailhead Signage. Access improvements.
22	Formalize Gorman Climbing Access Trails	4	Quartz/Gorman	86	10	8	9	8	8	Short	Cliff/Crag area of Gorman used by Climbers
23	Install Regulatory Signage at Wiseman Lakes indicating Sensitive Environment and Motorized Restrictions if West Bench trail 4 season use is approved.	4	Quartz/Gorman	84	10	10	8	6	8	Short	
24	Ensure Regulatory Signage at Lang Lake Trail has current information	4	Quartz/Gorman	82	10	10	8	7	6	Short	
25	Complete Hiking Trail and Signage Improvements from KHMR to Wisdom Tooth Lookout including information on restrictions and closures in Holt and Gorman	4	Quartz/Gorman/ KHMR	80	10	8	8	7	7	Med	Improve the trail condition to Holt Lake and Gorman Lake from KHMR. Install signage to improve wayfinding and provide information on restrictions and closures in Holt and Gorman

TABLE 1:DECISION MAKING MATRIX

CSRD AREA A: REGIONAL TRAILS STRATEGY DECISION-MAKING MATRIX											
Action Number	Description	PPA	PPA Name	Combined Score	GBRAP (Env, Social, Economic, Cultural)	Environmental	Economic	Social	Cultural	Term	Notes
					20	20	20	20	20		
					10 - GBRAP Compatible	10 - greatest	10 - greatest	10 - greatest	10 - greatest		
26	Work with multiple stakeholders (BC Rec Sites & Trails, Parks Canada, Golden Trails Alliance) to complete a Quartz Creek Summer Alpine Trail Feasibility Study	4	Quartz/Gorman/ KHMR	80	10	7	8	8	7	Med	Opportunity for non-motorized alpine trail pilot project based on environmental analysis and discussion with FLNRO. Conduct feasibility study and apply for Section 57
27	Quartz Creek Trail Improvements for Early Season Use - Winter	4	Quartz/Gorman	80	10	8	9	7	6	Immed	Golden Snowmobile Club has received funding through 2018 Grant funding for stump and boulder removal for early season grooming
28	Establish Hand Boat Launch and Blueway Sign for River Paddlers at Marl Creek Provincial Park	4	Quartz/Gorman	74	10	8	9	5	5	Med	Coordination and exact placement required with BC Rec Sites and Trails
29	Complete Gorman Motorized Staging Areas Improvements: Improvements to Parking Areas and Snow Removal	4	Quartz/Gorman	72	10	7	5	7	7	Med	Maintenance agreements required
30	Enhance and Improve the 2% Heritage Trail from Gorman Creek to Quartz Creek Rec Trail for 4-Season Use	4	Quartz/Gorman	68	10	5	5	8	6	Long	2% Heritage Trail from Nicholson to Cedar Lake and from KHMR to Gorman/Quartz
31	Work with BC Rec Sites and Trails to formalize GORMA West Bench Motorized Trail Network	4	Quartz/Gorman	68	4	7	8	8	7	Short	Recommendation based on discussions with Ministry of Forests, Lands, Natural Resource Operations, and Rural Development (FLNRORD) representatives
32	Work with BC Rec Sites and Trails to Revise Management Plan to Address Environmental Damage and Explore Potential Improvements to Quartz Creek Cabin Infrastructure: Wood Heat, Wood Shed, Internet Service	4	Quartz/Gorman	68	10	5	7	7	5	Med	Management Plan to Address Environmental Damage and Explore Potential Improvements to Quartz Creek Cabin Infrastructure: Wood Heat, Wood Shed, Internet Service
PPA - 5 BLAEBERRY											
33	Improve Rec Site Facilities at Redburn Creek (OB) Campground	5	Blaeberry	86	10	9	8	7	9	Med	Opportunity to improve signage at Redburn Creek (OB) Campground/Rec Site. Potential for future pit toilets.
34	Improve Trailhead Facilities at Thompson Falls (Syd's Trail)	5	Blaeberry	86	10	9	8	7	9	Short	Opportunity to improve wayfinding signage at trail to Thompson Falls (Syd's Trail).
35	Explore Blueway Site Designation at Burges and James Cadsden Provincial Park	5	Blaeberry	72	10	7	7	7	5	Med	1-3 primitive camping sites in Burges & James Gadsden Provincial Park accessible from the River to provide camping with primitive facilities for people doing a multi-day canoe on the Columbia, or a rest spot for those paddling the Blaeberry for the day.
36	Complete Signage Improvements to Willowbank Trail to Reduce Access Issues on Private Land	5	Blaeberry	68	10	8	6	5	5	Med	Signage improvements in Willowbank Area to reduce access issues on private land
PPA - 6: GLENOGLE											
37	Explore Opportunities to Improve Access Trail to Moberly Peak	6	Glenogle	40	5	5	3	4	3	N/A	Mining in area has impacted trail access. Coordination required to explore access while maintaining public safety

TABLE 1:DECISION MAKING MATRIX

CSRD AREA A: REGIONAL TRAILS STRATEGY DECISION-MAKING MATRIX											
Action Number	Description	PPA	PPA Name	Combined Score	GBRAP (Env, Social, Economic, Cultural)	Environmental	Economic	Social	Cultural	Term	Notes
					20	20	20	20	20		
					10 - GBRAP Compatible	10 - greatest	10 - greatest	10 - greatest	10 - greatest		
PPA - 7: KICKING HORSE MOUNTAIN RESORT											
38	Explore Opportunities to Construct an Adaptive Trail within Kicking Horse Mountain Resort Bike Park	7	Kicking Horse Mountain Resort & Backcountry	88	10	8	8	9	9	Med	KHMR tenure to develop if desired. Opportunity to expand recreation service types and create a known adaptive destination trail within the BC Adaptive Trail Network (Nakusp, Revelstoke, Whistler)
39	Improve Scalli Mag Single Track Trail to Address Environmental Issues and Provide Important Connection within the Trail Network.	7	Kicking Horse Mountain Resort & Backcountry	84	10	8	9	8	7	Immed	Improve Scalli Mag trail to address drainage issues. Important connection from KHMR to Moonraker trail network. Not intended to serve as mainline for adjacent trail development. Maintain as a single trail connection to minimize impact to wildlife. Improvements to this trail have been brought up through engagement events and with stakeholders. Designated RM2. Non-motorized, mild development use. Cumulative effects info/study would inform impacts on Wildlife corridor. Opportunity for winter grooming as a fat bike connection from KHMR.
40	Improve Trail Connectivity and wayfinding signage through the KHMR Neighbourhoods	7	Kicking Horse Mountain Resort & Backcountry	74	10	7	7	6	7	Med	Further develop the trail network connecting the different streets and subdivisions around the resort to provide both better ski access, as well as snowshoeing opportunities and walking/biking in the summer.
41	Explore Options to Expand Summer Hiking Trail from Upper Kranky Pants to Peak	7	Kicking Horse Mountain Resort & Backcountry	72	10	9	8	4	5	Med	KHMR tenure to develop if desired to expand hiking infrastructure
42	Develop a Hiking Trail from the Base of KHMR to the Peak	7	Kicking Horse Mountain Resort & Backcountry	70	10	9	7	4	5	Med	Develop a hiking trail from the gondola base to the top of the mountain. KHMR tenure to develop if desired to expand hiking infrastructure.
43	Implement Use Restrictions to T4 Trail to permit Hiking/Trail Running only and Trail and Landscape Rehabilitation	7	Kicking Horse Mountain Resort & Backcountry	70	9	7	6	8	5	Med	Use level issues for wildlife, environmental concerns, intense pressure from community and races. Coordination with Rod and Gun club required. RM1 summer and winter. Goat Habitat and High Biodiversity.
44	Complete improvements to 2% (Historic Columbia River Lumber) Heritage Trail from Cedar Lake to Gorman Creek	7	Kicking Horse Mountain Resort & Backcountry	62	7	7	5	6	6	Long	2% Heritage Trail from Nicholson to Cedar Lake and from KHMR to Gorman/Quartz
45	Complete trail improvements to T4 Trail to Provincial Trail Standards and Seek Approvals for Long-Term Trail Sustainability	7	Kicking Horse Mountain Resort & Backcountry	58	5	6	6	7	5	Med	Potential to develop a joint project with KHMR to build an in- and out-of-bounds trail connection (ex. purpose built T4 trail). Use level issues for wildlife, environmental concerns, intense pressure from community and races. Coordination with Rod and Gun club required. RM1 summer and winter. Goat Habitat and High Biodiversity. Issue with funneling additional traffic to Canyon Creek Trail.
46	Explore Feasibility to Formalize and Improve the Former Horse Pack Trail to Goodsir Mine	7	Kicking Horse Mountain Resort & Backcountry	56	8	4	6	5	5	Long	AKA Porphyry and Iron Hill Mine

TABLE 1: DECISION MAKING MATRIX

CSRD AREA A: REGIONAL TRAILS STRATEGY DECISION-MAKING MATRIX											
Action Number	Description	PPA	PPA Name	Combined Score	GBRAP (Env, Social, Economic, Cultural)	Environmental	Economic	Social	Cultural	Term	Notes
					20	20	20	20	20		
					10 - GBRAP Compatible	10 - greatest	10 - greatest	10 - greatest	10 - greatest		
PPA - 8: MOONRAKER/CEDAR LAKE											
47	Construct Cedar Lake Interpretive Boardwalk in sensitive Riparian Areas	8	Moonraker/Cedar Lake	84	9	9	7	8	9	Short	Construct interpretive boardwalk trail at Cedar Lake. Opportunity for interpretive signage and environmental programs. Assumes boardwalk construction in impacted and sensitive areas, not a trail around entire Cedar Lake.
48	Explore the potential for establishing Hiking Uptrack/Detours to the Lower Canyon Creek Lookout and Improve Signage to Reduce Conflict	8	Moonraker/Cedar Lake	80	8	7	8	9	8	Short	Use level issues for wildlife, environmental concerns, coordination with Rod and gun club required. RM1 summer and winter. Signage and messaging improvements to inform uptrack users to expect downhill bike traffic and danger to exposed cliffs - community/visitor education.
49	Investigate Fat Bike Winter Trail Network and Maintenance/Grooming Opportunities at Moonraker/CBT Trail Networks	8	Moonraker/Cedar Lake	74	5	7	8	9	8	Immed	Investigate opportunities to create a fat bike inter trail system and maintenance program (packing trails Cedar Camp, Odenata, North Star, Barking Dog, Arrowhead, etc.). Golden Outdoor Recreation Association has received funding through 2018 Grant funding and will pilot winter grooming in 2019.
50	Complete Twisted Sister Trail	8	Moonraker/Cedar Lake	68	5	6	8	9	6	Immed	Complete construction of the Twisted Sister, volunteer, hand-built trail. Use levels should be monitored long term for wildlife conflicts. Wildlife corridor quality impact may be a concern. Cumulative effects study would be valuable for this area and trail density. planning.
51	Expand Moonraker polygon to include Black/Double-Black Trails to provide diversity in trail Trails. Area Adjacent to LSD trail with new trails connect to FSR and not to Canyon Creek to reduce environmental impact.	8	Moonraker/Cedar Lake	68	5	5	7	9	8	Med	Plan/Design a Black and/or Double-Black technical XC Trail(s) adjacent to LSD trail. Apply for polygon for development. Concern over increased use in RM1 area of Canyon Creek i.e. sensitive goat habitat. Less concern if advanced trails don't all funnel to canyon creek and loop back to the FSR.
52	Enhance and Improve the 2% Heritage Trail from McBeath Rd to Cedar Lake	8	Moonraker/Cedar Lake	64	7	6	7	6	6	Long	2% Heritage Trail from Nicholson to Cedar Lake and from KHMR to Gorman/Quartz
53	Investigate Maintenance Agreement for Winter Clearing on Dogtooth Forest Service Road to Cedar Lakes Staging Area	8	Moonraker/Cedar Lake	60	5	7	5	7	6	Short	With mechanized winter grooming funding may not require road to be cleared during winter but winter parking will need to be accounted for with increased use.
54	Plan and Develop New Trails Off Twisted Sister to Create Trail Loop Options in this Area	8	Moonraker/Cedar Lake	58	5	4	7	7	6	Long	GBRAP RM1 Designation- Wildlife Corridor further study on maximum trail density and use levels required.
55	Create Jumphline Trail on the Existing Treachery Trail with Ride around Options	8	Moonraker/Cedar Lake	52	5	4	7	6	4	Long	GBRAP RM1 Designation - low impact, wildlife corridor. Issues with increased use expected to impact wildlife.

TABLE 1:DECISION MAKING MATRIX

CSRD AREA A: REGIONAL TRAILS STRATEGY DECISION-MAKING MATRIX											
Action Number	Description	PPA	PPA Name	Combined Score	GBRAP (Env, Social, Economic, Cultural)	Environmental	Economic	Social	Cultural	Term	Notes
					20	20	20	20	20		
					10 - GBRAP Compatible	10 - greatest	10 - greatest	10 - greatest	10 - greatest		
PPA - 9: GOLDEN											
56	Complete Trail Surfacing and Guardrail Improvements for the Rotary Trail to Keith King Memorial Sportsfields	9	Golden	84	10	8	7	9	8	Immed	Town of Golden initiative planned once windstorm clean-up is complete. Opportunity for reclamation projects to restore damage from windstorm and timber removal. Opportunity to make improvements for accessibility and Age friendly design Opportunity for bench nodes, educational signage, and protection of rare species and sensitive vegetation communities.
57	Construct a new Bike Skills Park utilizing Terrain Based Principles	9	Golden	84	10	8	7	9	8	Short	Current bike skills park does not meet current needs of the community. Opportunity to improve, expand, or relocate
58	Complete Rotary Trail Widening Potential Paving, Lighting in Strategic Locations	9	Golden	82	10	7	8	9	7	Med	Note: The Town of Golden received grant funding for \$5.87M for the Kicking Horse River Dyke Improvements Project. The extent of pathway and public realm improvements is currently unknown but this initiative will prove to be a markable improvement to the Rotary Trail in high use areas.
59	Develop Interpretive Trails/Signage at the Old Mill Heritage Site	9	Golden	80	10	9	8	6	7	Med	Interpretive attraction - critical piece of original infrastructure. Public safety concerns i.e. holes to fall in, town liability
60	Formalize Trails and Signage Improvements at Confluence Park	9	Golden	78	10	7	7	8	7	Med	Plan through Columbia Valley Greenway Alliance - 6 interpretive stations, Threat - trail improvements must account for seasonal water levels of the Columbia River
61	Establish Bush Party Trailhead/Potential Staging Area	9	Golden	78	10	7	7	8	7	Med	Opportunity to establish a small parking/staging area near Bush Party Trailhead for approximately 5 vehicles
62	Ensure Multi-Modal Pedestrian Access Across Columbia River when Bridge Updates Are Planned	9	Golden	76	10	8	7	7	6		Coordination with KHMR, CP, Town of Golden Required. Assumes minimal environmental impact as bridge replacement would require environmental mitigation.
63	Provide Trail Improvements to Anderson Road/Edelweiss Slough and Explore Opportunities for Interpretive/Nature Information Signage	9	Golden	76	10	8	7	6	7	Med	Threat due to environmental damage, Opportunity to improve through small boardwalk and trail improvements. This trail serves as an important Community Connection. Educational/ Interpretive opportunities through signage and programming.
64	STRATEGIC INITIATIVE: Proceed with Skatepark Expansion Phase 2	9	Golden	74	10	8	5	7	7	Long	Once funding is available or organization applies for and receives funding. Ensure design for Phase II meets the needs of the community and current skatepark design standards.
65	Complete Signage Improvements of Hospital Falls Trail	9	Golden	72	10	9	6	6	5	Med	Signage improvements at trailhead
66	Create a Multi-Modal Trail Along the Highway Bypass from 6th St. to Reflection Lake	9	Golden	70	10	7	6	7	5	Long	Create a multi-modal connection along the highway bypass from 6th Ave S/14th St. S (Sikh Temple) along the railway line, under HWY 95 bridge to Reflection Lake. Community Connection. Coordination Required With CP and Town of Golden

TABLE 1: DECISION MAKING MATRIX

CSRD AREA A: REGIONAL TRAILS STRATEGY DECISION-MAKING MATRIX											
Action Number	Description	PPA	PPA Name	Combined Score	GBRAP (Env, Social, Economic, Cultural)	Environmental	Economic	Social	Cultural	Term	Notes
					20	20	20	20	20		
					10 - GBRAP Compatible	10 - greatest	10 - greatest	10 - greatest	10 - greatest		
67	Create a Pedestrian/Cycling Crossing of the Kicking Horse River at the CP Bridge Near Confluence Park	9	Golden	68	10	5	5	8	6	Long	Community Connection. Coordination Required With CP and Town of Golden. Currently unlawful to cross though some do. Opportunity to create a Legal Loop.
68	Create a Multi-Modal Pathway Along Fisher Rd	9	Golden	66	10	6	5	7	5	Long	Community Connection and Age Friendly/Mobility Improvements
69	Create a Community Trail Connection from the Golden Visitor Centre to Canyon Ridge	9	Golden	66	10	5	6	6	6	Long	Currently no community connection. Concern over erodibility and steepness of slope.
70	Create a Multi-Modal Pathway Along Kicking Horse Dr	9	Golden	66	10	6	5	7	5	Long	Community Connection and Age Friendly/Mobility Improvements
PPA - 10: MT 7/MOUNTAIN SHADOWS											
71	Establish Trailhead at the Mount 7 Staging Area with Wayfinding Signage at Strategic Locations along trail to Mount 7 Summit	10	Mt 7/Mountain Shadows	86	10	8	8	9	8	Short	Signage improvements for public safety and wayfinding. GBRAP only sanctioned area for heli biking and scree riding. Mount 7 was intended to be the mountain biking hot spot. Historic significance - Psychosis Race
72	Complete Schacher Trail to Mt. 7 Summit: Maintenance and Sustainability Improvements	10	Mt 7/Mountain Shadows	86	10	7	8	9	9	Immed	Trail construction is near complete. Regular maintenance and sustainability improvements once operational. Trail will serve as a mainline trail for looped trail development long term.
73	Plan and Develop New Trails off the Schacher Trail to Create a Looped Trail Network	10	Mt 7/Mountain Shadows	84	10	8	8	9	7	Med	Establish Schacher Trail as the preferred uptrack trail and create new trail development as a looped trail system off Schacher Mainline Trail.
74	Analyze and improve existing sanctioned/unsanctioned Mount 7 trails	10	Mt 7/Mountain Shadows	84	10	8	8	9	7	Med	Inventory and analyze existing sanctioned/unsanctioned trails within Mt. 7 network, sustainability improvements, trails no longer being used to be decommissioned. Lead: GCC
75	Establish a Staging Area at base of Snake Hill/Tailgate (Shared with MTB, GORMA, Equestrian, etc.)	10	Mt 7/Mountain Shadows	82	10	8	7	8	8	Med	Multiple groups express interest in improving and managing this staging area as a shared amenity
76	Design a Family-Friendly and Accessible Trail in the Mountain Shadows Area. Potential for Adaptive Trail as within the Family Friendly Trail Area	10	Mt 7/Mountain Shadows	82	10	7	8	8	8	Med	Opportunity to expand recreation services and improve the family friendly/adaptive trail network
77	Formalize Climbing Access Trail off Mountain Shadows Trails to Magma Crag Climbing Area	10	Mt 7/Mountain Shadows	82	10	8	8	8	7	Med	Existing Climbing Area. Better trail access through Mt. 7/ Mountain Shadows Trail Network
78	Design a new modern motocross track in conjunction with GORMA Trail System development. Reclaim and re-purpose existing site to more suitable use.	10	Mt 7/Mountain Shadows	80	10	8	7	8	7	Med	Motorized use in wetland setting and adjacent to equestrian use is not compatible. Opportunity to relocate and improve infrastructure for all affected user groups. Opportunity to design something that is world class and a model for sustainable motorized recreation design
79	Establish a Schacher Staging Area between 6.5km or 10km	10	Mt 7/Mountain Shadows	80	10	8	7	8	7	Med	With Shacher Trail development near complete, constructing a staging area near the mid point will accommodate increased vehicle traffic and parking due to shuttling - Design for 5-7 vehicles

TABLE 1:DECISION MAKING MATRIX

CSRD AREA A: REGIONAL TRAILS STRATEGY DECISION-MAKING MATRIX											
Action Number	Description	PPA	PPA Name	Combined Score	GBRAP (Env, Social, Economic, Cultural)	Environmental	Economic	Social	Cultural	Term	Notes
					20	20	20	20	20		
					10 - GBRAP Compatible	10 - greatest	10 - greatest	10 - greatest	10 - greatest		
80	Design and Construct a Jump/Flow Trail on Mt 7	10	Mt 7/Mountain Shadows	78	10	7	7	8	7	Short	Create a jump/flow trail on Mt 7 as a blue trail, with black options. Weakness – there is currently no sanctioned jumpline trail within the Mountain Shadow or Mount 7 Network..
81	Develop Shared Use Trails for MTB and Motorized Use - Advanced Trials and Mountain Bike Use	10	Mt 7/Mountain Shadows	78	10	7	7	8	7	Med	Opportunity for collaboration between Golden Cycling Club and GORMA to create black trails for mountain bikes and trials motorbikes. Opportunity for signage improvements and messaging. Potential for E-bike trail development for Shared Use (Motorized + Non-Motorized Traffic)
82	Improve Overall Signage On Mount 7 to Indicate Shared Use Trails	10	Mt 7/Mountain Shadows	76	10	7	7	8	6	Short	Create signage to indicate that motorized use is permitted on trails (Cliffside, Rockabout, Trial and Error, Chute the Duck)
83	Work with BC Rec Sites and Trails to establish a Recreation Area for the Mount 7 and Mountain Shadows Trails.	10	Mt 7/Mountain Shadows	76	10	7	7	8	6	Short	Apply for a Section 56 for the Mountain Shadow Trail Network. Update current Memorandum of Understanding with Tenure holder if required.
PPA - 11: KICKING HORSE RIVER											
84	Explore opportunities for Trailhead and Parking Improvements for Kicking Horse Climbing Area	11	Kicking Horse River	74	10	8	7	6	6	Med	Known climbing area that lacks adequate parking facilities. May require coordination with Highway Zoning.
85	Explore an Overflow/Alternative Parking Location for Kicking Horse Climbing Area	11	Kicking Horse River	72	10	7	7	6	6	Med	Known climbing area that lacks adequate parking facilities. May require coordination with Highway Zoning.
86	Install signage and wayfinding improvements to Table Mountain and Frenchman's Ridge Trails	11	Kicking Horse River	72	10	8	5	6	7	Med	Opportunity to improve the Table Mountain and Frenchman's Ridge trailhead and wayfinding at 3 decision making nodes
PPA - 12: NICHOLSON/CERTAINTY MINE/HOBO REPEATER											
87	Complete a Feasibility/Impact Study for trail development in the Certainty Mine, 12 Mile, 14 Mile, Hobo Repeater Complex	12	Nicholson/Certainty Mine/Hobo Repeater	78	10	8	7	7	7	Short	Weakness - Recreation pressure in area. Wildlife concerns, concern over damage. RM2 Designation. Bear habitat. Potential for 12 Mile, 14 Mile, Hobo Repeater Complex. Opportunity to explore environmental protection areas, access improvements, parking and trailhead facilities. Opportunity to be encompassed in West Bench studies.
88	Explore opportunities to establish and sign a trail from Cedar House to the Mt. 7 Summit in conjunction with a trail connection from Cedar House to Rock About.	12	Nicholson/Certainty Mine/Hobo Repeater	74	10	7	7	7	6	Med	Currently low use levels. Opportunity to explore connectivity improvements.
89	Complete Trailhead and Signage Improvements at Canyon Creek Road in Nicholson	12	Nicholson/Certainty Mine/Hobo Repeater	72	10	7	7	6	6	Med	Informal Parking occurring that may cause conflict with adjacent land owners - explore opportunities to establish trailhead and signage
90	Explore the feasibility of establishing a Motorized Network for Canyon Lake Area	12	Nicholson/Certainty Mine/Hobo Repeater	58	10	5	5	6	3	Long	Area is close to wetlands that access is prohibited seasonally. Motorized use permitted with partial restrictions in adjacent areas per GBRAP. Tenure holder on adjacent lands requires consultation prior to applications for any proposed development.

TABLE 1:DECISION MAKING MATRIX

CSRD AREA A: REGIONAL TRAILS STRATEGY DECISION-MAKING MATRIX											
Action Number	Description	PPA	PPA Name	Combined Score	GBRAP (Env, Social, Economic, Cultural)	Environmental	Economic	Social	Cultural	Term	Notes
					20	20	20	20	20		
					10 - GBRAP Compatible	10 - greatest	10 - greatest	10 - greatest	10 - greatest		
PPA - 13: KAPRISTO											
91	Complete Trailhead and Signage Improvements at Kapristo Crag with trail application approval	13	Kapristo	74	10	7	7	7	6	Med	Lack of signage with potential for public safety implications. Proper water crossings required, potential to apply for protection for old growth forest. Low use levels and experienced climbing ability required.
PPA - 14: MOOSE											
92	Explore ongoing maintenance agreement for Wolverine Pass Trail to Kootenay NP. New Signage to be installed Summer 2018 by BC Rec Sites and Trails	14	Moose	82	10	8	8	8	7	Immed	Not for formalization of camping on the boundary. Signage approved and provided by BCRST. High wildlife and biodiversity area, also within conservation lands area.
PPA - 15: PARSON/HARROGATE/SPILLIMACHEEN											
93	Complete access improvements to established Silent Pass and McMurdo Trails including regulatory improvements to illustrate closure boundaries and enforcement.	15	Parson/Harrogate/Spillimacheen	80	10	7	8	8	7	Med	Opportunity for improvements and illustrating closures
94	Explore feasibility of maintaining the Goodluck Trail	15	Parson/Harrogate/Spillimacheen	78	10	8	8	6	7	Long	Remote and difficult travel, wilderness route. Historic significance.
95	Create a Permanent Staging Area for Silent Pass Trail - Install Trailhead Signage and Safety Messaging and Infrastructure: Beacon Check	15	Parson/Harrogate/Spillimacheen	72	10	6	7	7	6	Short	Deficient parking, no proper staging area, no beacon check currently. Agreement required with Forestry and private land owners

SUMMARY OF RECREATION NETWORK PRIORITIES + INITIATIVES

This DRAFT Summary of the Decision Making Matrix and SWOT Map analysis is intended to highlight the top scoring initiatives for the recreation network throughout Golden and Area A . This summary synthesizes the results of an extensive community and stakeholder driven process to be reviewed by Working Group. Feedback will be gathered from the Client and Working Group to inform the Short List of development recommendations and initiatives which will be formulated into phasing opportunities over a **ten-year period** and beyond.

- Recreation Initiatives that received a score between **84 -100** have been classified **HIGH PRIORITY**
- Recreation Initiatives that received a score between **65 - 83** have been classified **MEDIUM PRIORITY**
- Recreation Initiatives that received a score between **0 - 64** have been classified **LOW PRIORITY**

TABLE 2: REGIONAL TRAILS STRATEGY RECREATION NETWORK SUMMARY

Action Number	Description	PPA	Combined Score	Term
HIGH PRIORITY INITIATIVES				
1	STRATEGIC INITIATIVE: Form Trails Alliance for Golden and Area A	Regional	94	Short
2	Complete a phased feasibility study for a multi-modal trail within the Highway 95 ROW from Golden to Nicholson (Phase 1)	Regional	94	Med
3	STRATEGIC INITIATIVE: Complete a West Bench Environmental Impact/Cultural Heritage Study	Regional	92	Med
4	Complete a phased feasibility study for a multi-modal trail within the Highway 95 ROW from Nicholson to Parson (Phase 2)	Regional	90	Long
5	Secure annual funding for Asset Management, Trail Maintenance and Rehabilitation	Regional	88	Short
6	Work with Multiple Stakeholders to Re-Establish the David Thompson Heritage Trail and Access to the Mummery Glacier	Regional	88	Immed
21	Complete/On-going Road Access Improvements to Gorman Lake and Complete Trailhead Improvements	Quartz/Gorman	88	Short
38	Explore Opportunities to Construct an Adaptive Trail within Kicking Horse Mountain Resort Bike Park	KHMR	88	Med
7	Complete a phased feasibility study for a multi-modal trail within the Highway 95 ROW from Parson/South (Phase 3).	Regional	86	Long
15	Work with BC Rec Sites and Trails to formalize the Help Lake/Blackwater Climbing Area, Trails, and Staging Area	Kinbasket	86	Immed
22	Formalize Gorman Climbing Access Trails	Quartz/Gorman	86	Short
33	Improve Rec Site Facilities at Redburn Creek (OB) Campground	Blaeberry	86	Med
34	Improve Trailhead Facilities at Thompson Falls (Syd's Trail)	Blaeberry	86	Short
71	Establish a Trailhead and Signage at the Mount 7 Summit Trail from Staging Area	Mt 7/Mountain Shadows	86	Immed
72	Complete Schacher Trail to Mt. 7 Summit: Maintenance and Sustainability Improvements	Mt 7/Mountain Shadows	86	Short

TABLE 2: SUMMARY OF PRIORITIES + INITIATIVES

REGIONAL TRAILS STRATEGY RECREATION NETWORK SUMMARY				
Action Number	Description	PPA	Combined Score	Term
HIGH PRIORITY INITIATIVES				
16	STRATEGIC INITIATIVES: Kinbasket Heritage Inventory Assessment Study	Kinbasket	84	Short
23	Install Regulatory Signage at Wiseman Lakes indicating Sensitive Environment and Motorized Restrictions if West Bench trail 4 season use is approved.	Quartz/Gorman	84	Short
39	Improve Scalli Mag Single Track Trail to Address Environmental Issues and Provide Important Connection within the Trail Network.	KHMR	84	Immed
47	Construct Cedar Lake Interpretive Boardwalk in sensitive Riparian Areas	Moonraker/ Cedar Lake	84	Short
56	Complete Trail Surfacing and Guardrail Improvements for the Rotary Trail to Keith King Memorial Sportsfields	Golden	84	Immed
57	Construct a new Bike Skills Park utilizing Terrain Based Principles	Golden	84	Short
73	Plan and Develop New Trails off the Schacher Trail to Create a Looped Trail Network	Mt 7/Mountain Shadows	84	Med
INITIATIVES REQUIRING CONSIDERATION/DISCUSSION WITH WORKING GROUP				
74	Analyze and improve existing sanctioned/unsanctioned Mount 7 trails	Mt 7/Mountain Shadows	82	Short
78	Design a new modern motocross track in conjunction with GORMA Trail System development. Reclaim and re-purpose existing site to more suitable use.	Mt 7/Mountain Shadows	80	Med
25	Hiking Trail and Signage Improvements from KHMR to Wisdom Tooth Lookout including information on restrictions and closures in Holt and Gorman	KHMR	80	Med
26	Work with multiple stakeholders (BC Rec Sites & Trails, Parks Canada, Golden Trails Alliance) to complete a Quartz Creek Summer Alpine Trail Feasibility Study	Quartz/Gorman	80	Med
87	Feasibility Study for Certainty Mine, 12 Mile, 14 Mile, Hobo Repeater Complex	Nicholson/ Certainty Mine/Hobo Repeater	78	Short
62	Provide Trail Improvements to Anderson Road/Edelweiss Slough and Explore Opportunities for Interpretive/Nature Information Signage	Golden	76	Med
29	Gorman Motorized Staging Areas: Improvements to Parking Areas and Snow Removal	Quartz/Gorman	72	Short
51	Expand Moonraker polygon to include Black/Double-Black Trails to provide diversity in trail Trails. Area Adjacent to LSD trail with new trails connect to FSR and not to Canyon Creek to reduce environmental impact.	Moonraker/ Cedar Lake	68	Med
43/45	T4 Trail Improvement Scenarios	KHMR/ Moonraker	70/58	Short



TECHNICAL MEMO #3



DRAFT REGIONAL TRAIL STRATEGY REPORT



WORKING GROUP MEETING 6: DRAFT REPORT +
TECHNICAL MEMO #4



FINAL REPORT

May 2018

Note: Timeline is approximate and subject to change