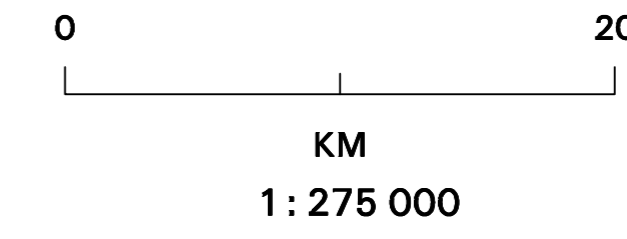


Map Projection : Albers
Datum : NAD 83

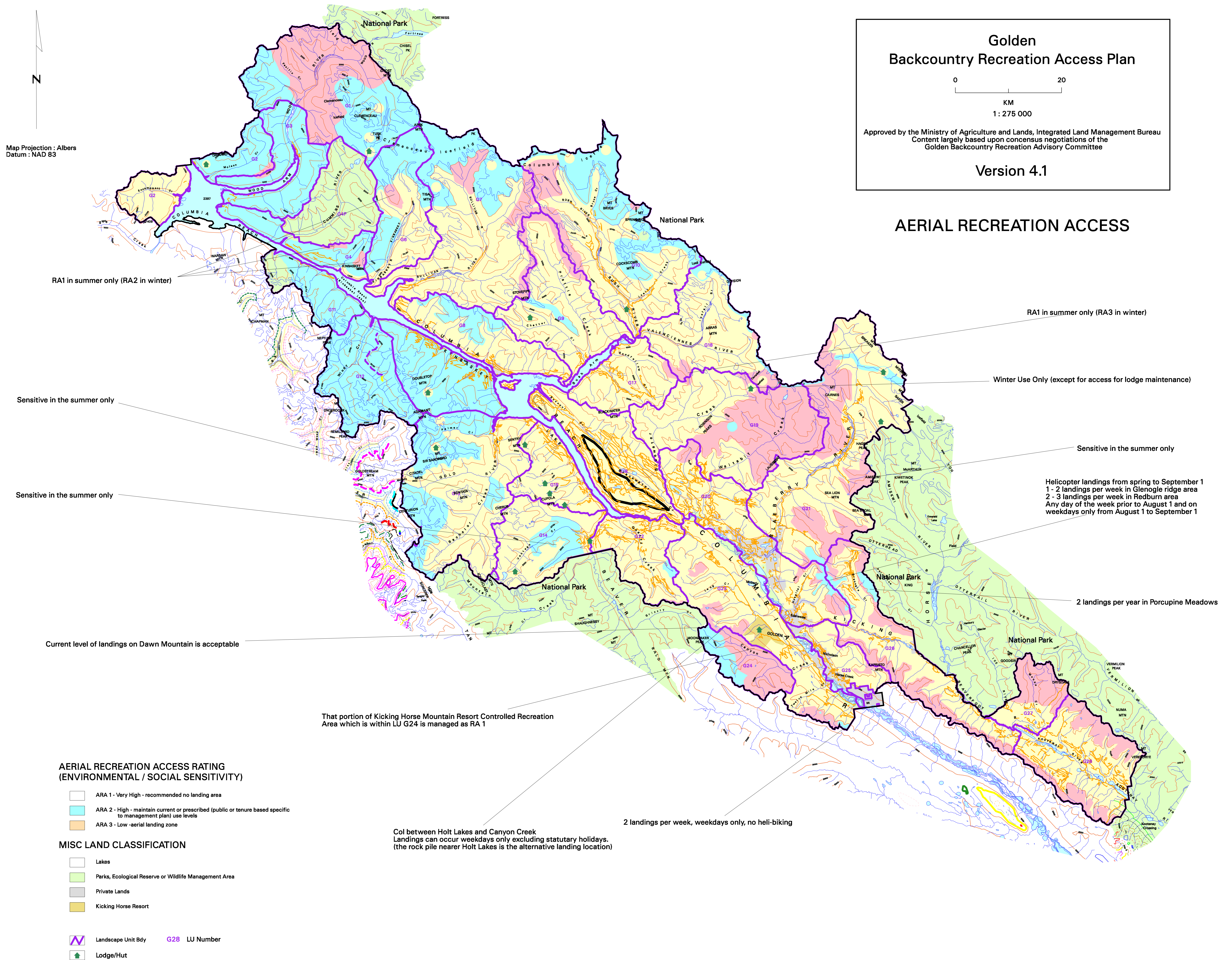
Golden Backcountry Recreation Access Plan



Approved by the Ministry of Agriculture and Lands, Integrated Land Management Bureau
Content largely based upon consensus negotiations of the
Golden Backcountry Recreation Advisory Committee

Version 4.1

AERIAL RECREATION ACCESS



AERIAL RECREATION ACCESS RATING (ENVIRONMENTAL / SOCIAL SENSITIVITY)

- ARA 1 - Very High - recommended no landing area
- ARA 2 - High - maintain current or prescribed (public or tenure based specific to management plan) use levels
- ARA 3 - Low - aerial landing zone

MISC LAND CLASSIFICATION

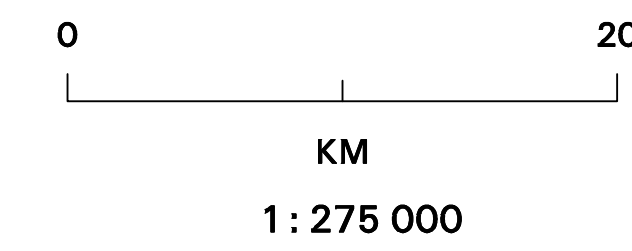
- Lakes
- Parks, Ecological Reserve or Wildlife Management Area
- Private Lands
- Kicking Horse Resort

- Landscape Unit Bdy
- G28 LU Number
- Lodge/Hut



Map Projection : Albers
Datum : NAD 83

Golden Backcountry Recreation Access Plan



Approved by the Ministry of Agriculture and Lands, Integrated Land Management Bureau
Content largely based upon consensus negotiations of the
Golden Backcountry Recreation Advisory Committee

Version 4.1

WINTER GROUND (Snow-based) RECREATION ACCESS

Some roads may be designated as winter motorized to facilitate cat-skiing depending upon specific proposal criteria

Winter motorized corridor along main haul road open February 1 to snowmelt

Selected roads may be targeted for closure for caribou habitat reasons

Snowmobiling allowed from April 15 to snowmelt

Key Mountaineering Area

RA3 snowmobile corridor to be established (north of Hwy. 1)

Areas important for tenured heliski use in the Quartz and Donald Creek area. These zonations were agreed to and managed for since 1990.

Corridor linkage to railgrade may occur in the future

Motorized corridor between KHMR and Holt Ck for commercial tenured use only.

That portion of Kicking Horse Mountain Resort Controlled Recreation Area which is within LU G24 is managed as RA 1

Perched basin remains open for snowmobiling

The RM1 Zonation in LU G23 relates to infrastructure development and not use levels.

RA3 motorized access corridors to the reservoir to be identified

RA3 Snowmobile corridor to be defined between woodlot holder and snowmobile sector

Potential for RA3 corridors

Johnson Road extending northwest of Seward Road to the Colepits area will be managed for non-motorized (RA 1) recreation opportunities

RM1 (minimal) use levels, no motorized access through private land

The Dogtooth FSR is a main access route for snowmobiling into the West Bench. Use of the road for snowmobiling must take into account that snowmobiles are not allowed to be operated on plowed roads. Parking areas have been established at the 7 and 14 km areas along this road to help manage this issue.

Use patterns/levels still unresolved

Lower elevations next to the Columbia River wetlands are zoned RA1 in winter to manage for important animal populations.

The area below the Nordic ski area is recommended for low development (no lodges) in order to manage for wildlife values.

Specific closures to some roads may be discussed in the future (mountain goat travel corridor)

High number of Domestic Water Licences. Sensitive area to ground motorized. The current low level of local motorized use can continue but this area will be promoted for non-motorized use.

GROUND RECREATION ACCESS CATEGORY

- GRA 1 - No motorized use
- GRA 2 - Motorized use with partial restriction
- GRA 3 - Motorized use

MISC LAND CLASSIFICATION

- Lakes
- Parks, Ecological Reserve or Wildlife Management Area
- Private Lands
- Kicking Horse Resort
- GRA 1 Corridor (Non - Motorized Winter)
- GRA 2 Corridor (Motorized Winter - partial season)
- GRA 3 Corridor (Motorized All Winter)
- Access Road
- Highway 1 and 95
- Landscape Unit Boundary G28 LU Number
- Kicking Horse Mountain Resort Buffer Area
- Lodge/Hut

RECREATION MANAGEMENT STRATEGIES

- RM 1 - Low Development and Use
 - Informal structures Only - to accommodate existing and approved use, and to mitigate environmental damage on trails or backcountry destinations
 - Low incidence of managed recreation trails, routes or sites
 - Low acceptance of recreational changes in the landscapes
 - Low incidence of human contact
- RM 2 - Moderate development and Use
 - Small scale formal structures may be acceptable in specific areas. Further planning is required to determine in which LUs designated as RM2 should have these structures.
 - Moderate number of managed recreation trails, routes and sites may be present
 - Moderate acceptance of recreational changes in the landscape
 - Moderate incidence of human contact or managerial presence
- RM 2 - Nordic Ski Zone
 - Recreational development must be oriented to facilitate nordic skiing and be conducive to maintaining the quality of nordic skiing. Small scale formal structures for day-use may be acceptable in certain locations. Overnight accommodation structures are not acceptable
- RM 3 - High Development and Use
 - High number of managed trails, routes and sites may be present
 - High acceptance of recreational changes in the landscapes
 - High incidence of human contact or managerial presence
- RM 4 - Large or small scale structures are present
 - Moderate to High number of localized recreation trails and modifications are present
 - No new accommodation structures acceptable, maximum limits to non-industrial change achieved
 - High incidence of human contact or managerial presence

NOTES AND DEFINITIONS

Informal Structures include campsite facilities such as tent pads, toilets and information kiosks

Small-scale Formal Structures include public and commercial day use huts/cabins and larger toilet buildings or small overnight huts/cabins

Large-scale Formal Structures include commercial lodges and outbuildings associated with large single to multi-day overnighting purposes

National Parks are predominantly non-motorized, except for passenger vehicular access on the major valley highway corridors and in some other front country valleys

Recreation Management Strategies do not apply to corridors

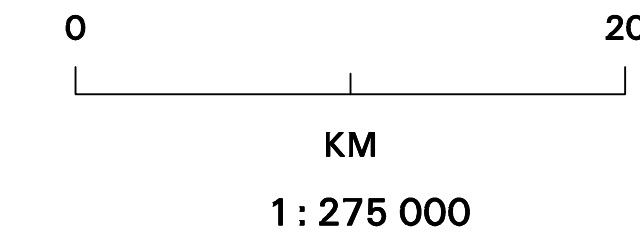
Summer motorized recreation, where acceptable is confined to roads/trails. (Precludes such motorized use in alpine areas)

Areas next to the Columbia Wetlands and the upper Holt, upper Lang, upper Cirque and upper Quartz Creek drainages are considered to be important for wildlife values. Lodge and recreational infrastructure development is recommended to occur outside of these areas.

The RM1 Zonation in LU G23 Relates to use infrastructure development and not use levels. Moonraker trail area is recommended to be maintained as non-motorized in summer. This area is important for mountain biking. Most of the Moonraker trail area is non-motorized in summer. Above the moonraker area, the Hyak and Tallis creek roads are open for motorized use.

Map Projection : Albers
Datum : NAD 83

Golden Backcountry Recreation Access Plan



Approved by the Ministry of Agriculture and Lands, Integrated Land Management Bureau
Content largely based upon consensus negotiations of the
Golden Backcountry Recreation Advisory Committee

Version 4.1

SUMMER GROUND RECREATION ACCESS



Selected roads may be targeted for closure for caribou habitat reasons

The area below the Nordic ski area is recommended for low development (no lodges) in order to manage for wildlife values.

The area below Kicking Horse Mountain Resort is open for motorized use in the summer, but use levels are recommended to be low to manage for resort and wildlife values.

Lower elevations next to the Columbia river wetlands are open for summer motorized use only from July 1st to snowfall. This is to manage for important animal populations at this key time of year.

Quartz, Oldman, Donald, Cirque, Lower Lang and Gorman roads are open for summer motorized use. The Gorman road is open for motorized use in summer up to the last bridge.

The Upper Holt, Lang, Cirque and Quartz creek drainages are very important for grizzly bears. Lodge and recreational infrastructure development in these areas is not recommended.

That portion of Kicking Horse Resort Controlled Recreation Area which is within LU G24 is managed as RA 1

The old rail grade below Kicking Horse Mountain Resort is a public use corridor for summer motorized and non-motorized recreation. A portion of that corridor may be re-aligned on the northern tip by KHMR in the future to minimize conflicts with the resort.

This corridor open after Sept 1st. This corridor to be better identified in the future

RA3 motorized access corridors to the reservoir to be identified

Potential for RA3 corridors

RM1 (minimal) use levels, no motorized access through private land

Summer motorized access restricted on river flats below Campground

Summer motorized access September 1 to winter only

Summer motorized access August 15th to winter only

RA2 Corridor, April 15 - July 15 only

Specific closures to some roads may be discussed in the future (mountain goat travel corridor)

High number of Domestic Water Licences. Sensitive area to ground motorized. The current low level of local motorized use can continue but this area will be promoted for non-motorized use.

No commercial overnight winter accommodation use

RECREATION MANAGEMENT STRATEGIES

- RM 1 - Low Development and Use**
Informal structures Only - to accommodate existing and approved use, and to mitigate environmental damage on trails or backcountry destinations
Low incidence of managed recreation trails, routes or sites
Low acceptance of recreational changes in the landscapes
Low incidence of human contact
- RM 2 - Moderate development and Use**
Small scale formal structures may be acceptable in specific areas. Further planning is required to determine which areas in which LUs designated as RM2 should have these structures.
Moderate number of managed recreation trails, routes and sites may be present
Moderate acceptance of recreational changes in the landscape
Moderate incidence of human contact or managerial presence
- RM 2 - Nordic Ski Zone**
Recreational development must be oriented to facilitate nordic skiing and be conducive to maintaining the quality of nordic skiing. Small scale formal structures for day-use may be acceptable in certain locations. Overnight accommodation structures are not acceptable
- RM 3 - High Development and Use**
High number of managed trails, routes and sites may be present
High acceptance of recreational changes in the landscapes
High incidence of human contact or managerial presence
- RM 4 - Large or small scale structures are present**
Moderate to High number of localized recreation trails and modifications are present
No new accommodation structures acceptable, maximum limits to non-industrial change achieved
High incidence of human contact or managerial presence

NOTES AND DEFINITIONS

- Informal Structures** include campsite facilities such as tent pads, toilets and information kiosks
- Small-scale Formal Structures** include public and commercial day use huts/cabins and larger toilet buildings or small overnight huts/cabins
- Large-scale Formal Structures** include commercial lodges and outbuildings associated with large single to multi-day overnighting purposes
- National Parks are predominantly non-motorized, except for passenger vehicular access on the major valley highway corridors and in some other front country valleys
- Recreation Management Strategies do not apply to corridors
- Summer motorized recreation, where acceptable is confined to roads/trails. (Precludes such motorized use in alpine areas)
- Areas next to the Columbia Wetlands and the upper Holt, upper Lang, upper Cirque and upper Quartz Creek drainages are considered to be important for wildlife values. Lodge and recreational infrastructure development is recommended to occur outside of these areas.
- The RM1 Zonation in LU G23 Relates to use infrastructure development and not use levels. Moonraker trail area is recommended to be maintained as non-motorized in summer. This area is important for mountain biking. Most of the Moonraker trail area is non-motorized in summer. Above the moonraker area, the Hyak and Tallis creek roads are open for motorized use.

GROUND RECREATION ACCESS CATEGORY

- GRA 1 - No motorized use
- GRA 2 - Motorized use with partial restriction
- GRA 3 - Motorized use

MISC LAND CLASSIFICATION

- Lakes
- Parks, Ecological Reserve or Wildlife Management Area
- Private Lands
- Kicking Horse Resort
- GRA 2 Corridor (Motorized Summer - partial season)
- GRA 3 Corridor (Motorized Summer - all season)
- Access Road
- Highway 1 and 95
- Landscape Unit Boundary G28 LU Number
- Kicking Horse Mountain Resort Buffer Area
- Lodge/Hut