



Columbia Wetlands Stewardship Partners  
– 3CW Conservation Lands Project  
Planning For Landscape Level Habitat  
Connectivity

Presented By: Brian Gustafson, MSc.

# Project Overview



- Need for conservation actions on the landscape
- Examples of cumulative impacts – Donald to Golden Corridor
- Examples of land designations and securements – Fairmont Corridor
- Valuation of land parcels
- What is next?



# Need for Conservation Actions on the Landscape

- CWSP Priority Action # 1 - Conserve and Restore Montane Valley-Bottom Processes and Habitats that Benefit a Suite of Species of Interest and Conservation Concern
- CWSP Priority Action # 3 - Identify and Protect Existing High Quality Habitats
- CWSP Priority Action # 6 - Identify and Enhance Connectivity and Corridors

# Need for Conservation Action on the Landscape



- Cumulative impacts on the landscape encroaching on cross valley habitat connectivity
  - Transportation Routes
  - Recreation – Adventure + Commercial Tourism
  - Industrial Activities (Resource Extraction)
  - Commercial and Residential Development



# How each activity disturbs elk

High volume trail use creates an impact zone avoided by wildlife

Distance from each side of trail that elk will flee. \*

Hiking:  
400 meters



Horse:  
550 meters



Biking:  
750 meters

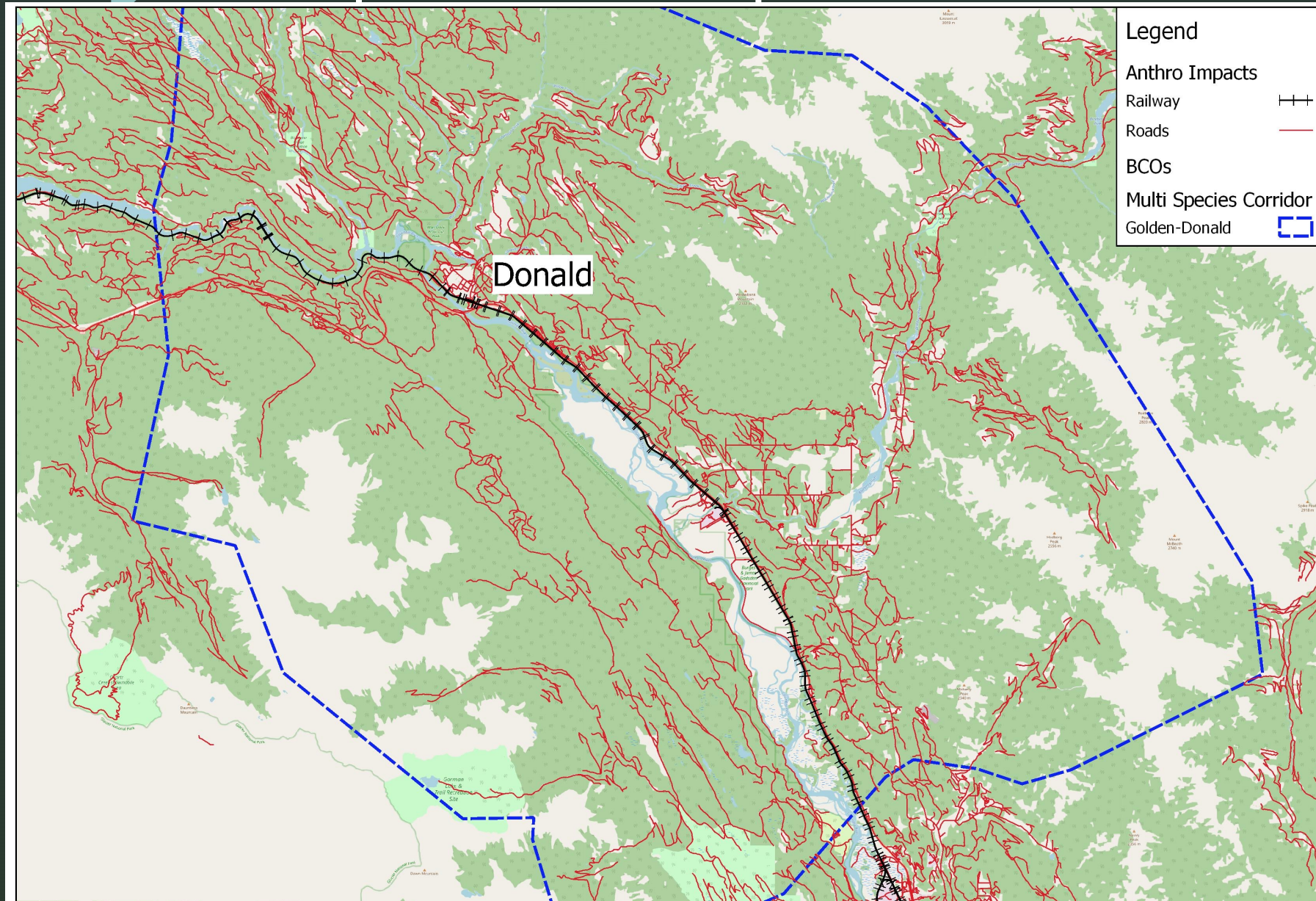


ATV:  
1350 meters



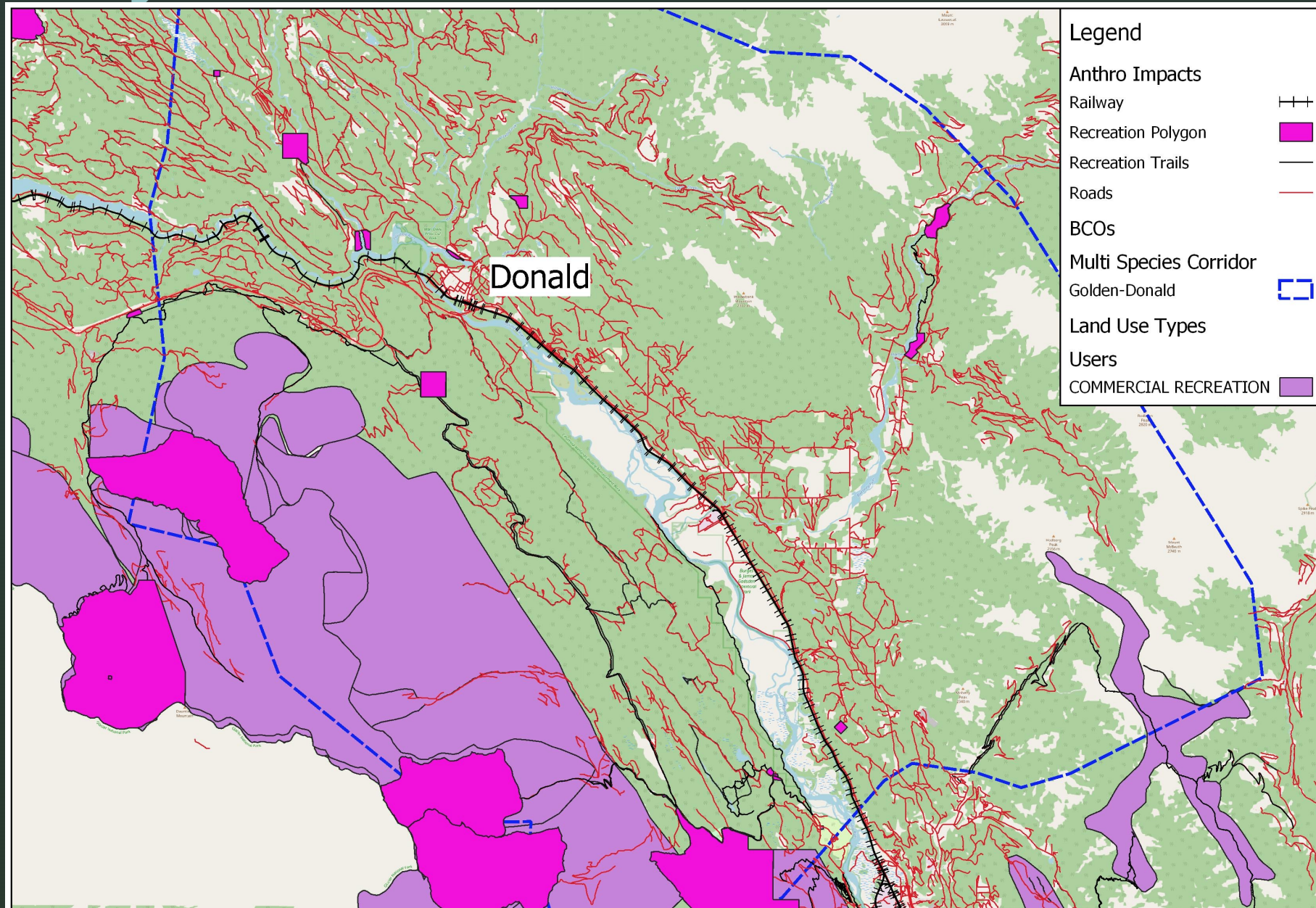
- Study by US Forest Service and State of Oregon, using collared elk
- 20% probability point for one disturbance

# Cumulative Impacts – Transportation Routes



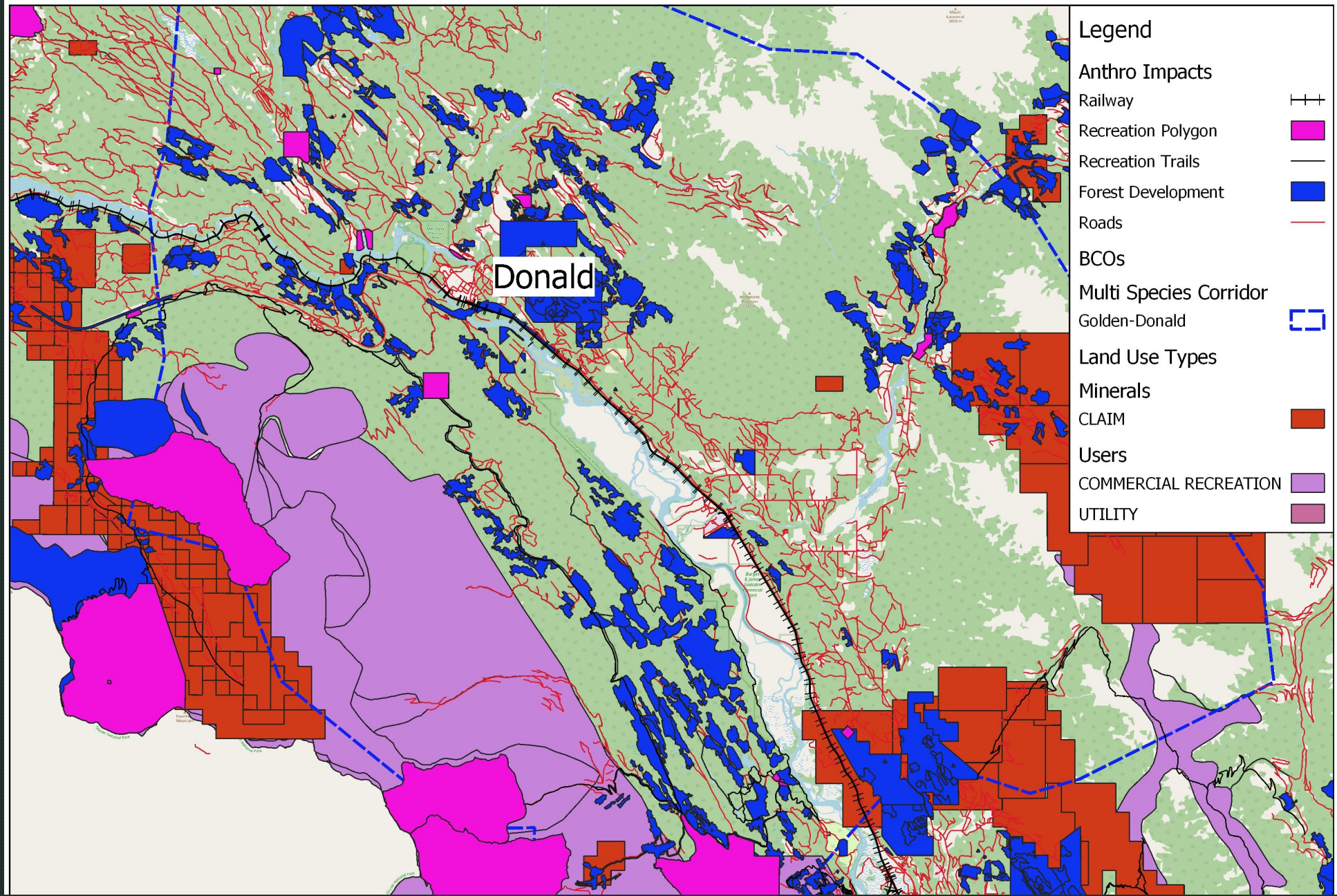


# Cumulative Impacts – Recreational Land Use



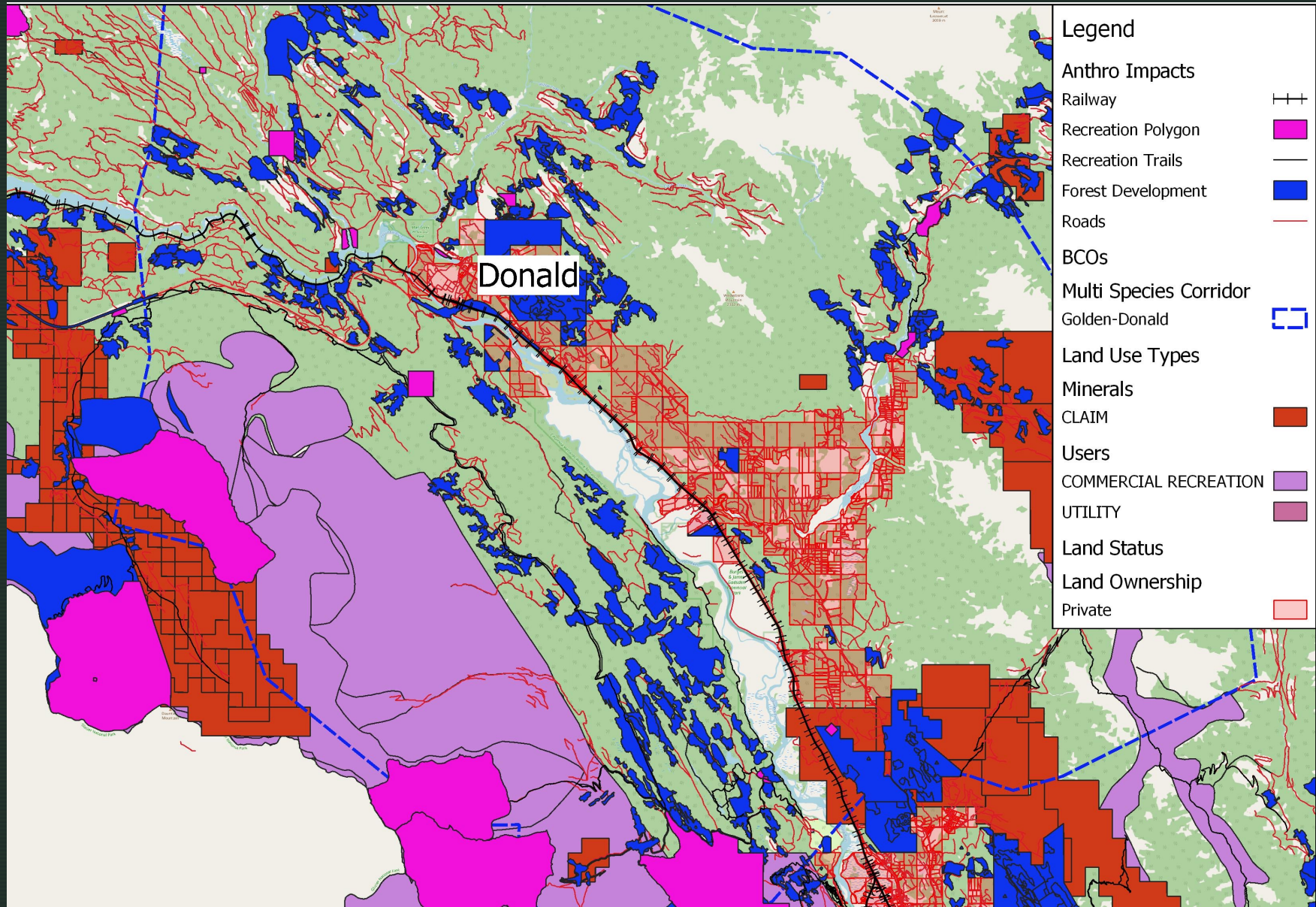


# Cumulative Impacts – Industrial Use



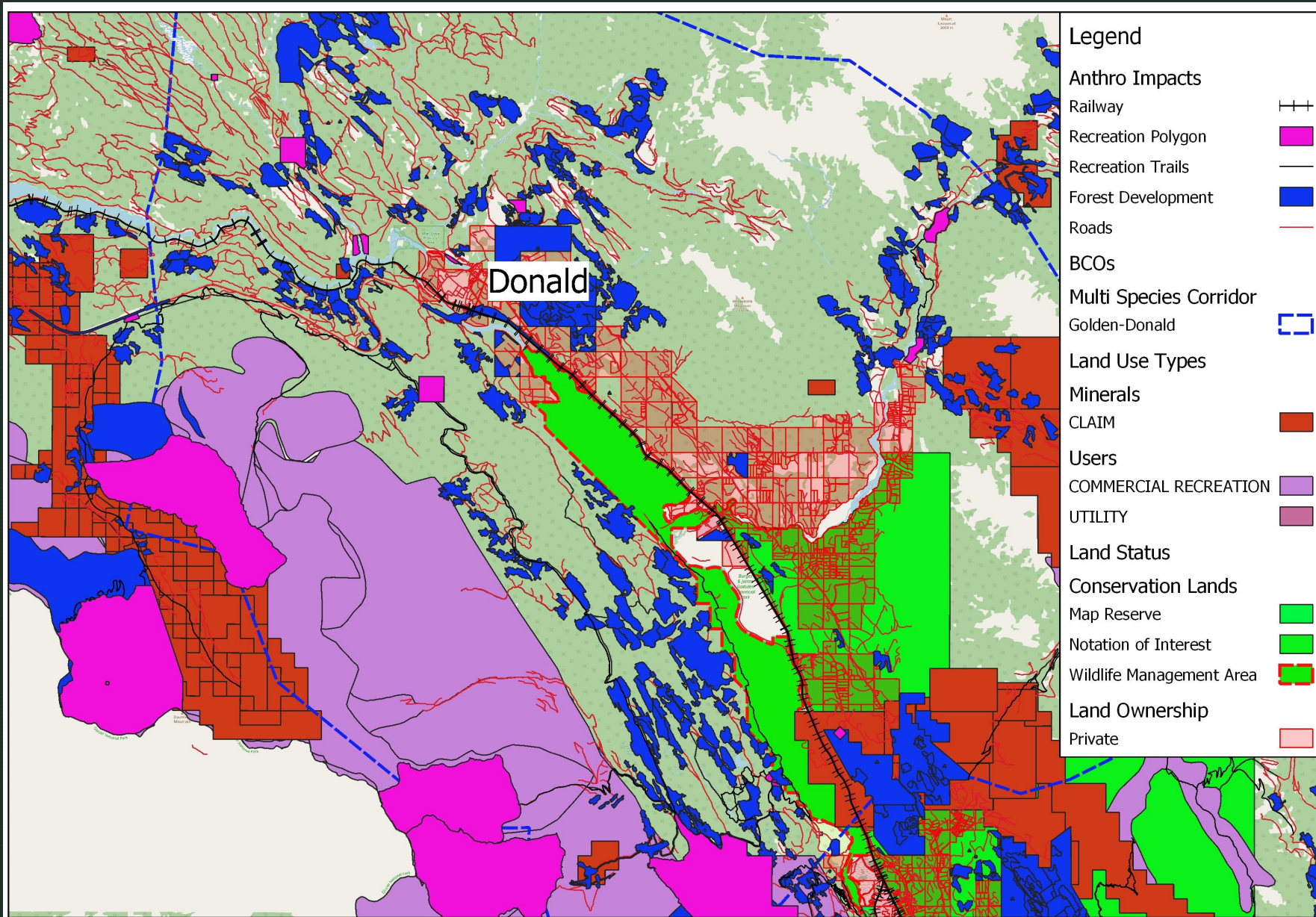


# Cumulative Impacts – Residential/Commercial Development



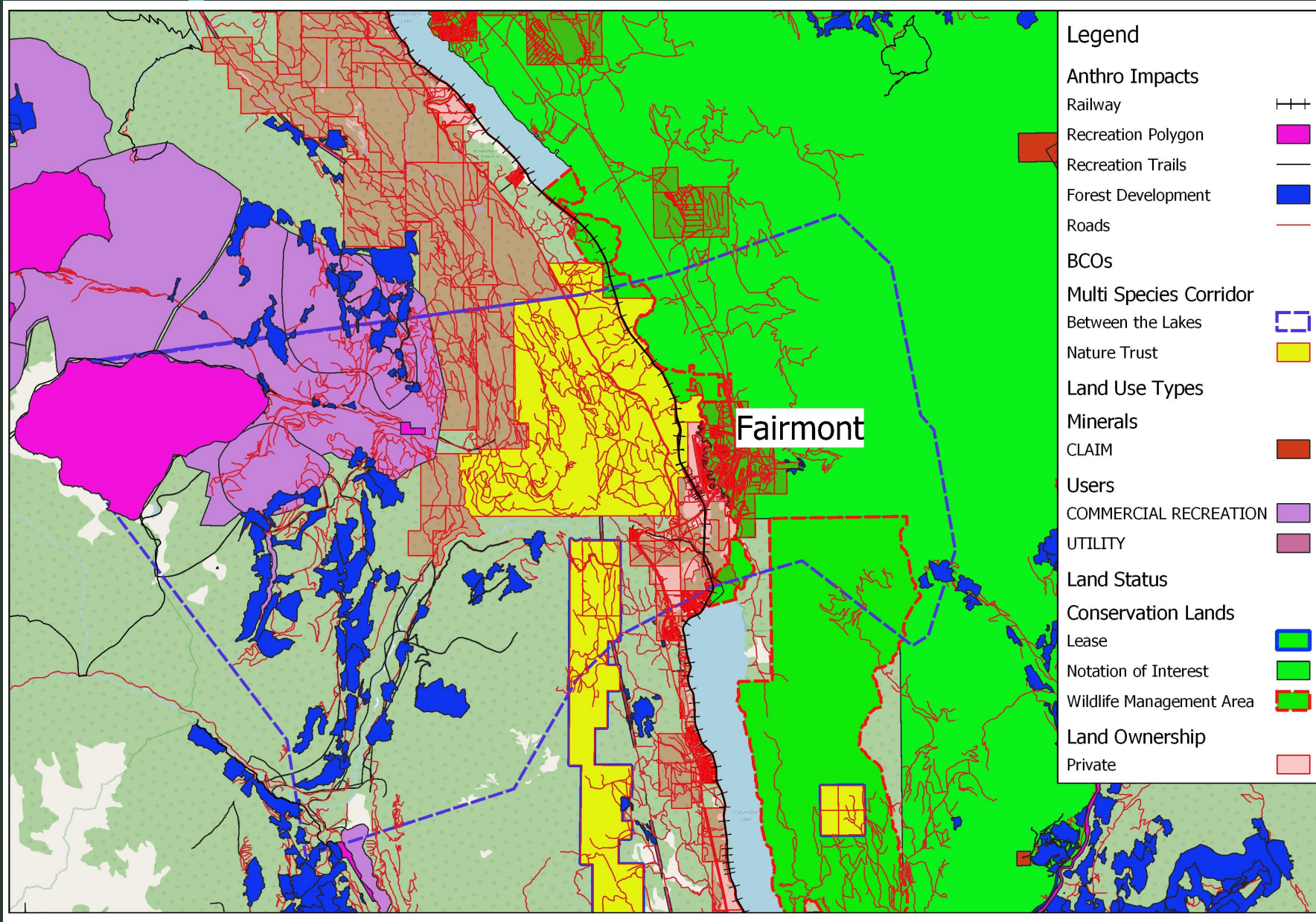


# Cumulative Impacts – Conservation Properties





# Fairmont Corridor



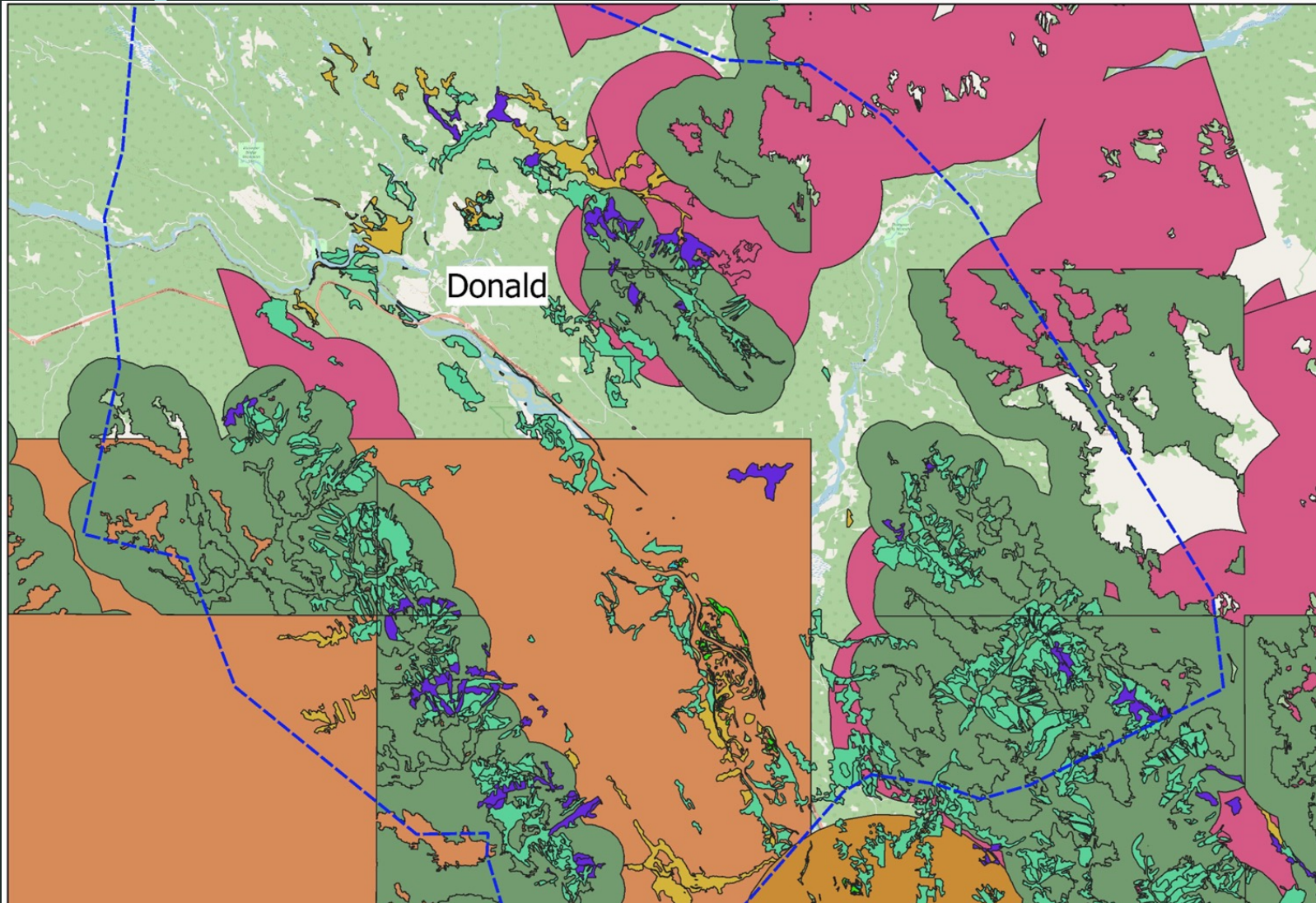
# Identifying Biodiversity Conservation Opportunities



- Crown and private properties identified within the Columbia Valley between Canal Flats and Donald
- Assess properties for biodiversity values
- Developed a matrix for evaluating properties for priority
- Recommendations for different forms of conservation actions



# BCO- Valuation Matrix

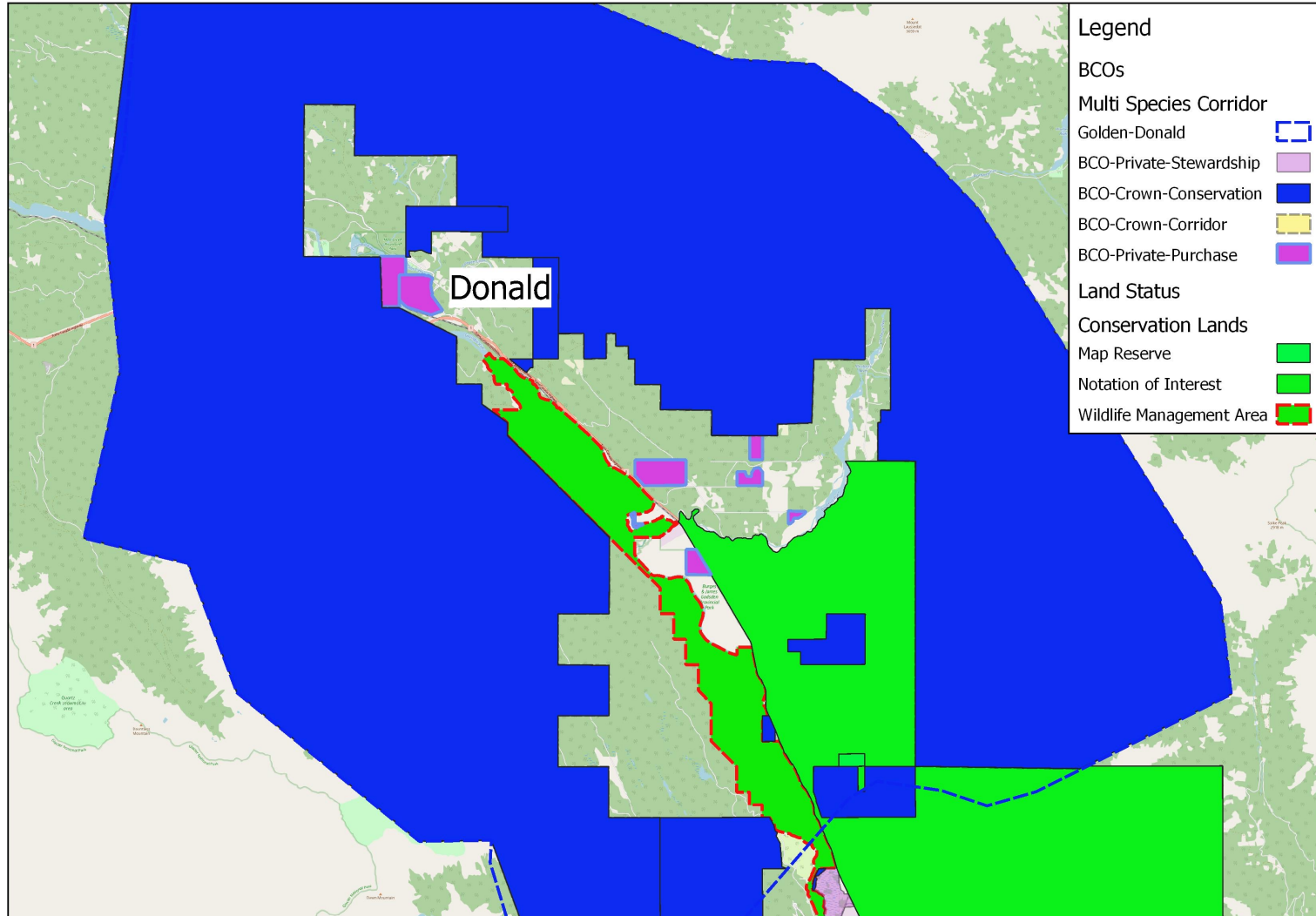


## Values assigned for:

- Habitats and Species at Risk;
- Important Habitats;
- Forest Structure;
- Landscape Context;
- Land use;
- Property Size;
- Conservation Values; and
- Feasibility

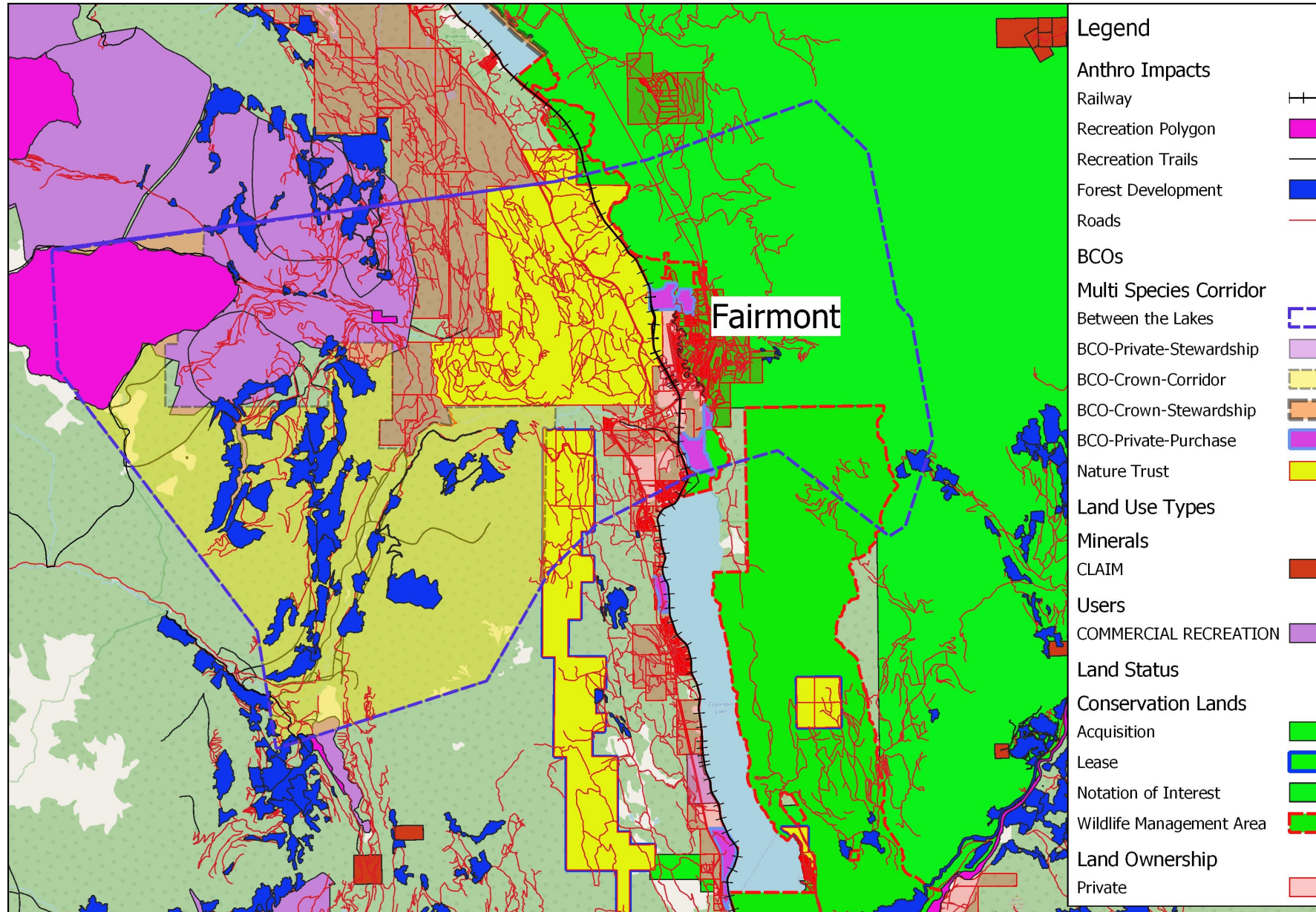


# BCO Options



- Stewardship Opportunities (Land Owners and Tenure Holders)
- Land Purchases (NCC, Nature Trust etc.)
- Conservation Land Designation Options – Crown Lands

# Fairmont Corridor – With BCOs



# Steps Forward- Filling in the Data/Knowledge Gaps

- **Benchlands SAR and ecosystem data**
- **Document the importance of corridor areas**
- **Collaboratively incorporate traditional and culturally important areas**
- **Mapping of stewardship properties**
- **Build collaborative relationships**

